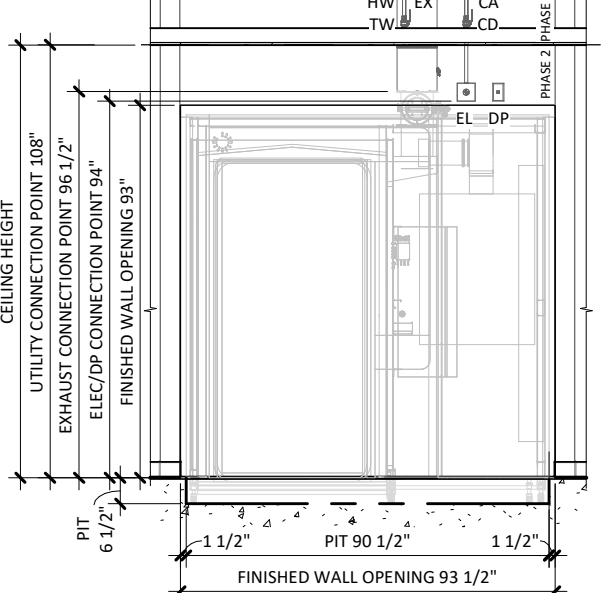


1 UTILITY LAYOUT
1/4" = 1'-0"



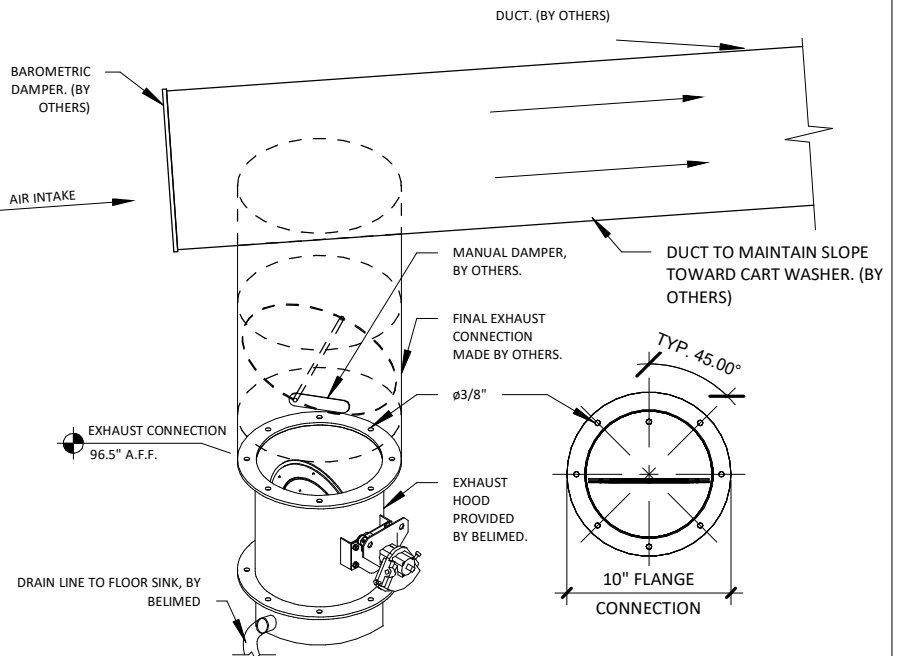
2 UTILITY FRONT ELEVATION
1/4" = 1'-0"

LEGEND

LINETYPES:

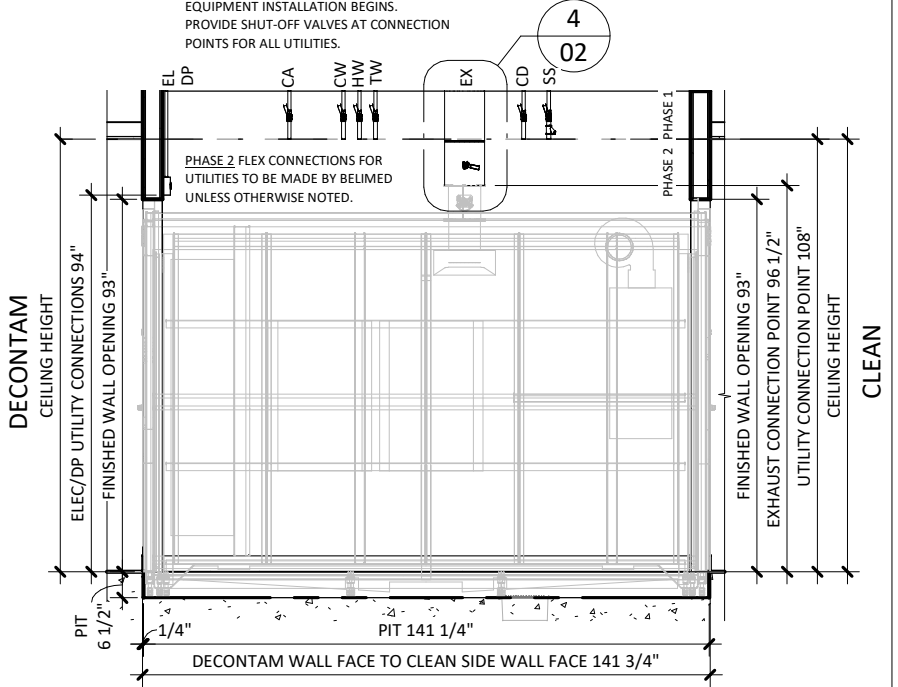
----- FINISHED FLOOR LEVEL WITHIN 1/4" TOLERANCE

----- NEW 6.5" PIT, BY OTHERS



4 WD750 EXHAUST CONNECTION
1" = 1'-0"

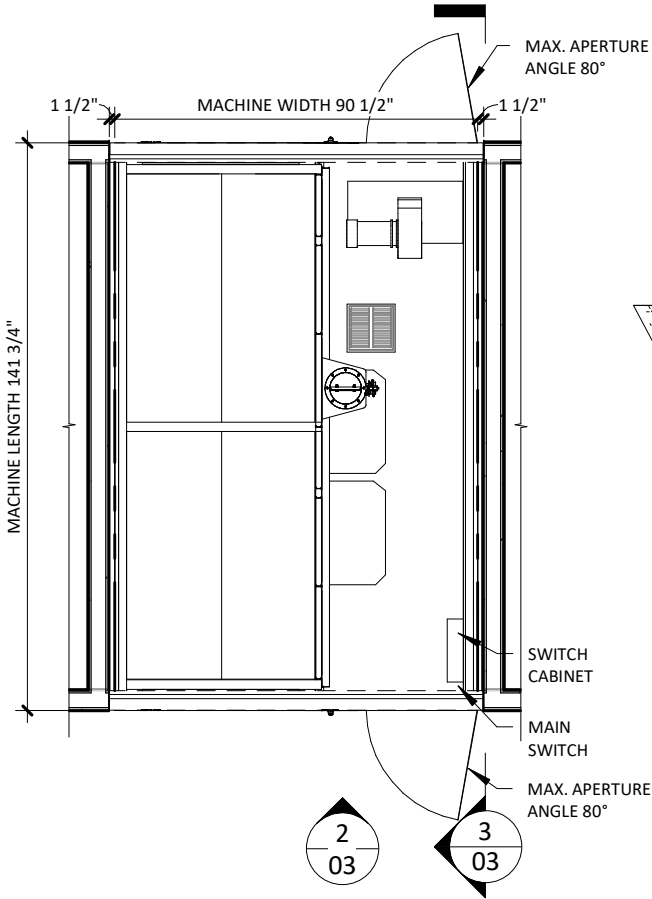
PHASE 1 CONNECTION POINT FOR UTILITIES ARE TO BE PROVIDED BY OTHERS BEFORE EQUIPMENT INSTALLATION BEGINS. PROVIDE SHUT-OFF VALVES AT CONNECTION POINTS FOR ALL UTILITIES.



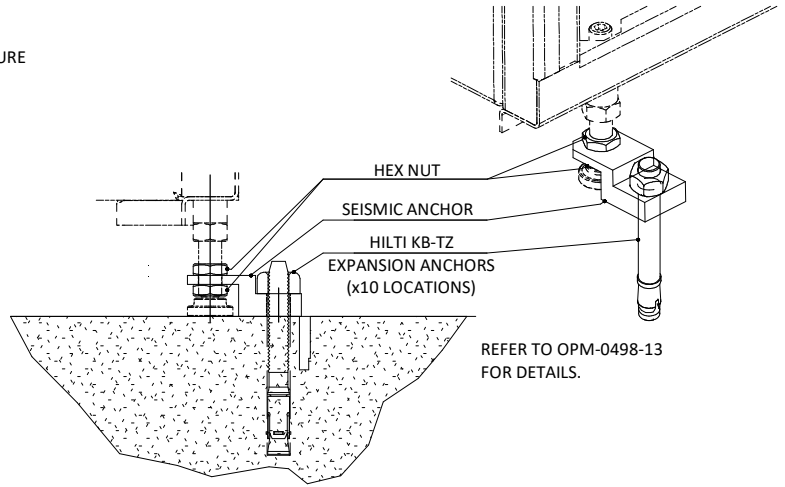
3 UTILITY SIDE ELEVATION
1/4" = 1'-0"

LINETYPES:

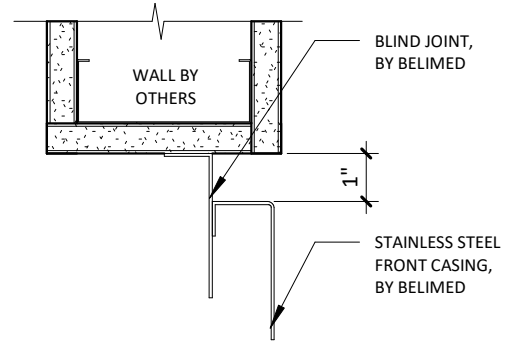
--- CHAMBER OUTLINE



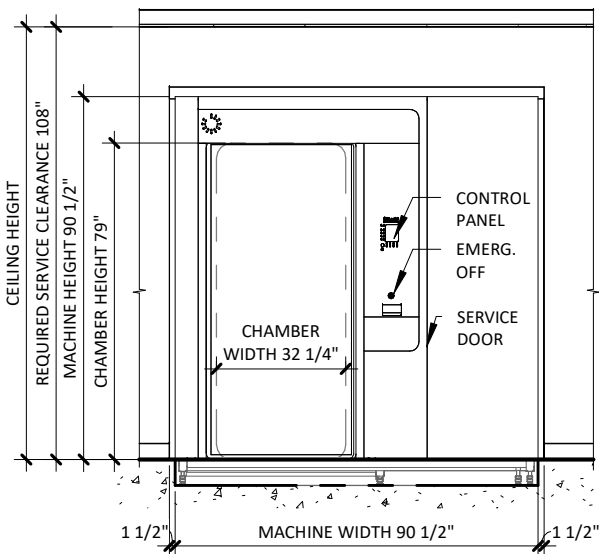
1 EQUIPMENT PLACEMENT PLAN
1/4" = 1'-0"



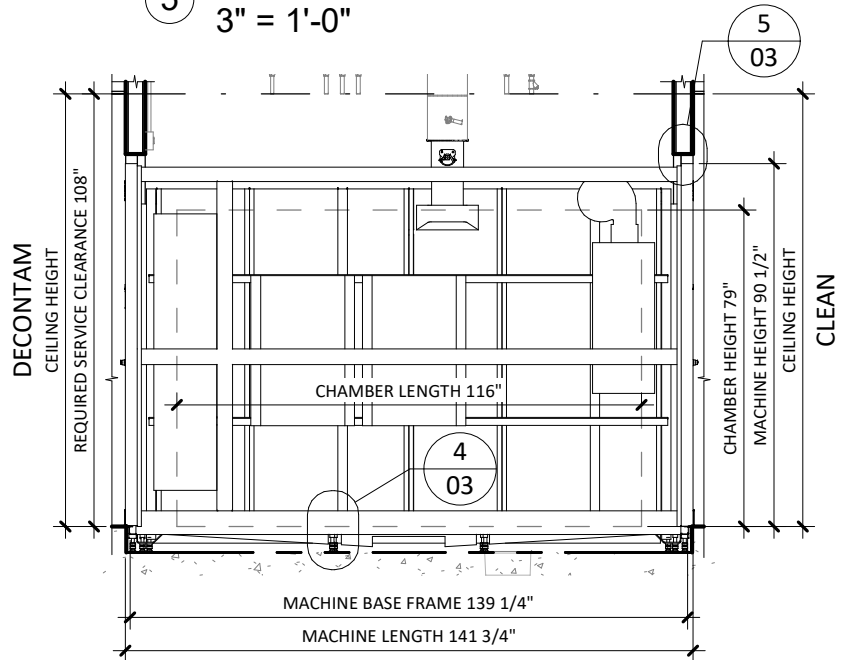
4 SEISMIC ANCHORING DETAIL
3/8" = 1'-0"



5 TRIM ATTACHMENT - WD750
3" = 1'-0"



2 EQUIPMENT FRONT ELEVATION
1/4" = 1'-0"



3 EQUIPMENT SIDE ELEVATION
1/4" = 1'-0"

WASHER/DISINFECTOR MODEL WD750L - TECHNICAL SPECIFICATIONS

REQUIRED INPUTS

| Symbol | Description | Value | Utility Notes | Connection Method | Final Utility Conn. By: | |
|--------|----------------------------|---------------------------------------|--|-------------------|-------------------------|---------|
| | | | | | Others | Belimed |
| SS | Utility: | Steam Supply | Steam must be dry, saturated, free from all impurities such as gases, oil, dirt, or other contaminants. Provide steam strainer with #100 mesh size. All steam drops must be piped from top of steam supply line. | Hard Pipe | X | |
| | Connection Size/Type: | 2.0 Inch / MNPT | | | | |
| | Pressure: | Min: 50.8 psig Max: 65.3 psig | | | | |
| | Peak Consumption: | 17.0 lbs/min | | | | |
| | *Consumption per Load: | 110.0 - 154.0 lbs | | | | |
| HW | Utility: | Hot Water | Water must be softened to 0-60 ppm. Minimum water temperature is 120°F. (Colder HW temperature will result in longer cycles and higher steam consumption). *HW for both Cart and Instrument Cycles* | Flex | | X |
| | Connection Size/Type: | 3/4 inch / MNPT | | | | |
| | Pressure: | Min: 30.0 psig Max: 50.0 psig | | | | |
| | Cart Cycle (~18 min) | | | | | |
| | Peak Consumption: | 13.2 gal/min | | | | |
| | *Consumption per Load: | 55.0 gal | | | | |
| | Instrument Cycle (~55 min) | | | | | |
| CW | Utility: | Cold Water | Water must be softened to 0-60 ppm. *CW for Instrument Cycle only* | Flex | | X |
| | Connection Size/Type: | 3/4 inch / MNPT | | | | |
| | Pressure: | Min: 30.0 psig Max: 50.0 psig | | | | |
| | Peak Consumption: | 13.2 gal/min | | | | |
| TW | Utility: | Treated Water | Deionized (DI) or Reverse Osmosis (RO) used with a conductivity of less than or equal to 15µs/cm. Slower flow rates will result in longer cycle times. *TW for Instrument Cycle only* | Flex | | X |
| | Connection Size/Type: | 3/4 inch / MNPT | | | | |
| | Pressure: | Min: 30.0 psig Max: 50.0 psig | | | | |
| | Peak Consumption: | 13.2 gal/min | | | | |
| EL | Utility: | Electric | 208V, 3 phase, 60 Hz, 25A circuit protection with straight blade receptacle: NEMA 15-30R; Grainger part No. 5Z889 | Receptacle | | X |
| | Connection Type: | Junction box w/receptacle | | | | |
| | Voltage (Phase): | 3 Phase | | | | |
| | Voltage (Nominal): | 208 VAC | | | | |
| | Voltage (Frequency): | 60 Hz | | | | |
| | Circuit Protection: | 25 Amps | | | | |
| CA | Utility: | Compressed Air | Air must be dry and oil free. CA is used for pneumatic controls. | Flex | | X |
| | Connection Size/Type: | 1/4 Inch / MNPT | | | | |
| | Pressure: | Min: 90.0 psig Max: 110.0 psig | | | | |
| | Peak Consumption: | 7.1 CFM | | | | |
| DP | Utility: | Data Port | Location: Preferred Ethernet port location is in the enclosed service area of the washer/disinfector or within 5 ft of machine | | | X |
| | Connection Type: | RJ45 Receptacle | | | | |
| | Connection Quantity: | One (1) RJ45 Ethernet port per mach. | | | | |
| | Facility Wiring: | Cat-5 or better | | | | |
| | Final Connection: | Patch cables for final conn. provided | | | | |
| | Port IP Setup: | Each RJ45 requires static IP address | | | | |

ESTIMATED EMISSIONS

| | | | | | | |
|----|------------------------------|-----------------|---|--------------------|---|--|
| CD | Utility: | Condensate | Condensate removal by customer per local code. Arising condensate has to be returned without pressure. | Hard Pipe | X | |
| | Connection Size/Type: | 3/4 Inch / MNPT | | | | |
| DR | Utility: | Open Drain | Provide floor sink or trench drain and trap. | 4" Copper | X | |
| | Drain Outlet: | 4.0 Inch | | | | |
| | Discharge Flow Rate: | 71.3 gal/min | | | | |
| | Connection Type: | Indirect Drain | | | | |
| EX | Medium: | Air Exhaust | Duct should be pitched back to unit. Duct materials: Galvanized steel, polyethylene, and stainless steel. Belimed to provide exhaust adapter. Manual damper to be provided by others. Max. humidity is 100%. Max. temperature is 230°F. | Rigid Duct Fitting | X | |
| | Connection Size: | 10.0 Inch | | | | |
| | Peak Flow Rate: | 1059.0 CFM | | | | |
| | Duct Diameter at Connection: | 8.0 Inch | | | | |
| | Maximum Back-Pressure: | 0.029 PSI | | | | |
| | Medium: | Heat Radiation | Equipment room heat radiation will vary due to steam pipe insulation by others. | | | |
| | Load side radiation: | 700 W | | | | |
| | Unload side radiation: | 700 W | | | | |
| | Equip. room radiation: | 2500 W | | | | |
| | Total radiation: | 6400 W | | | | |
| | Medium: | Noise Radiation | | | | |
| | Maximum Radiation(Net): | < 70 dBA | | | | |

PHYSICAL SPECIFICATIONS

| Parameter: | Carry-In Dimensions ¹ | Usable Chamber Dim. | |
|-------------------|----------------------------------|---------------------|---|
| Height: | 6.5 in | 79.0 in | ¹ Largest item to be carried in is sump pan. |
| Width: | 47.3 in | 32.3 in | |
| Length: | 126.0 in | 116.0 in | |
| Parameter: | Weights | | |
| Operating Weight: | 6160.0 lbs | | Operating Weight = Machine + Water + Two Carts |
| HCAI NUMBER: | OPM-0498-13 | | |

*Values are for a "Normal Cycle".

Additional Information:

MNPT = Male Pipe Thread

For alternate utility connections, please contact Belimed.

Others must provide back flow prevention for water supply.

Others must provide service valves for steam and water supply, and recommended steam pressure gauge.

All utility supplies and connections are to be provided by others, per local code.

Belimed recommends for others to apply a liquid waterproof membrane to pit or area underneath washer/disinfector.

Pit dimensions are the required finished measurements including the application of any liquid waterproofing membrane.

TS-WD750L_RevF