

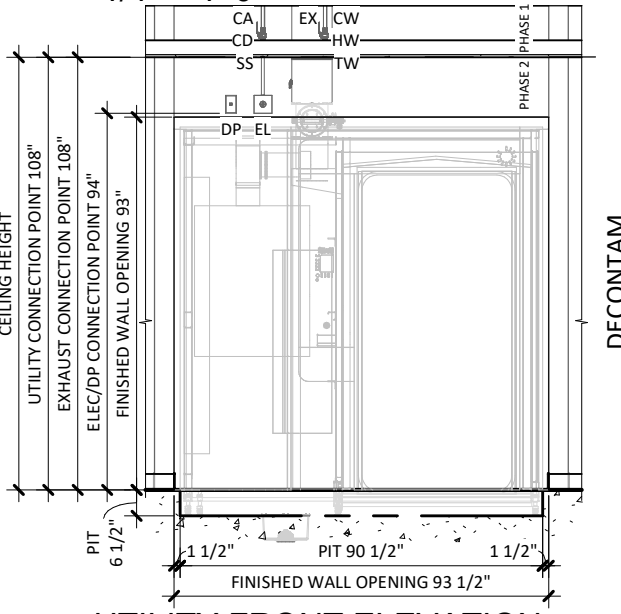
4 WD750 EXHAUST CONNECTION

1" = 1'-0"

PHASE 1 CONNECTION POINT FOR UTILITIES ARE TO BE PROVIDED BY OTHERS BEFORE EQUIPMENT INSTALLATION BEGINS. PROVIDE SHUT-OFF VALVES AT CONNECTION POINTS FOR ALL UTILITIES.

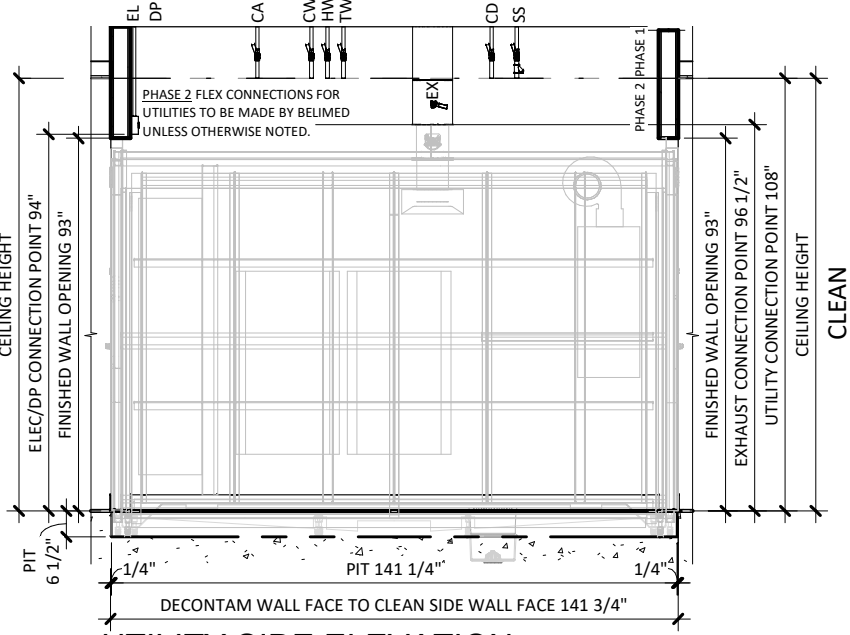
1 UTILITY LAYOUT

1/4" = 1'-0"



2 UTILITY FRONT ELEVATION

1/4" = 1'-0"

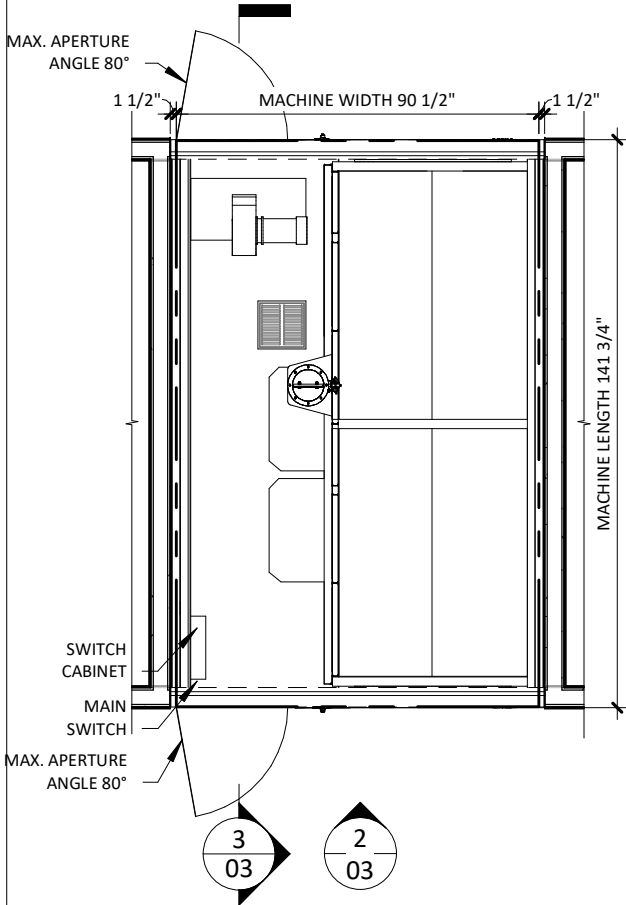


3 UTILITY SIDE ELEVATION

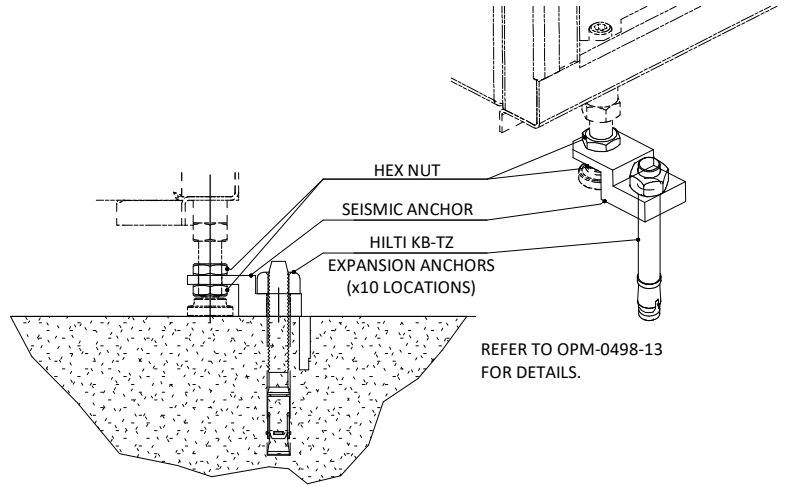
1/4" = 1'-0"

LINETYPES:

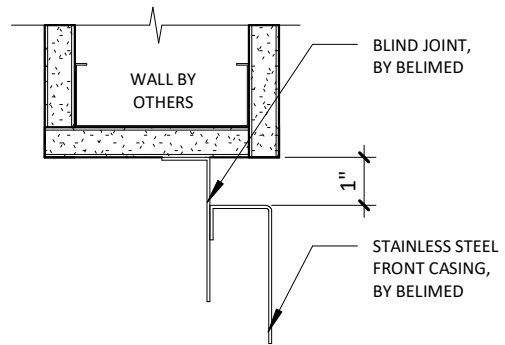
--- CHAMBER OUTLINE



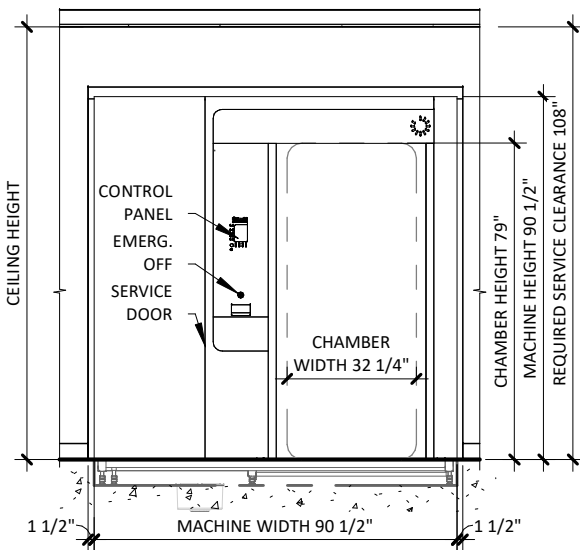
1 EQUIPMENT PLACEMENT PLAN
1/4" = 1'-0"



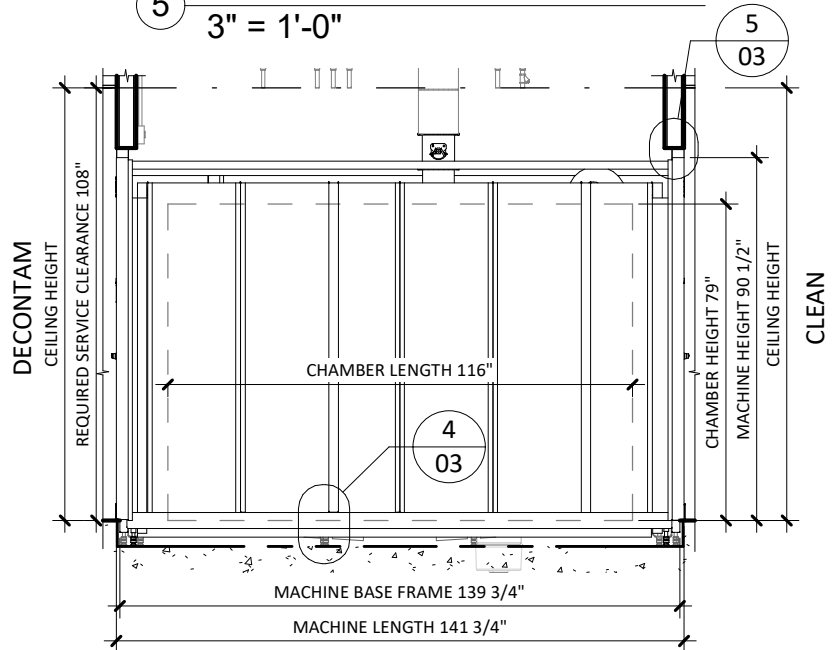
4 SEISMIC ANCHORING DETAIL
3/8" = 1'-0"



5 TRIM ATTACHMENT - WD750
3" = 1'-0"



2 EQUIPMENT FRONT ELEVATION
1/4" = 1'-0"



3 EQUIPMENT SIDE ELEVATION
1/4" = 1'-0"

WASHER/DISINFECTOR MODEL WD750L - TECHNICAL SPECIFICATIONS

REQUIRED INPUTS

Symbol	Description	Value	Utility Notes	Connection Method	Final Utility Conn. By:	
					Others	Belimed
SS	Utility:	Steam Supply		Hard Pipe	X	
	Connection Size/Type:	2.0 Inch / MNPT				
	Pressure:	Min: 50.8 psig	Max: 65.3 psig			
	Peak Consumption:	17.0 lbs/min				
	*Consumption per Load:	110.0 - 154.0 lbs				
HW	Utility:	Hot Water		Flex		X
	Connection Size/Type:	¾ inch / MNPT				
	Pressure:	Min: 30.0 psig	Max: 50.0 psig			
	Cart Cycle (~18 min)					
	Peak Consumption:	13.2 gal/min				
	*Consumption per Load:	55.0 gal				
	Instrument Cycle (~55 min)					
	Peak Consumption:	13.2 gal/min				
	*Consumption per Load:	84.0 gal				
	HW for both Cart and Instrument Cycles					
CW	Utility:	Cold Water		Flex		X
	Connection Size/Type:	¾ inch / MNPT				
	Pressure:	Min: 30.0 psig	Max: 50.0 psig			
	Peak Consumption:	13.2 gal/min				
	*Consumption per Load:	42.0 gal				
	CW for Instrument Cycle only					
TW	Utility:	Treated Water		Flex		X
	Connection Size/Type:	¾ inch / MNPT				
	Pressure:	Min: 30.0 psig	Max: 50.0 psig			
	Peak Consumption:	13.2 gal/min				
	*Consumption per Load:	42.0 gal				
	TW for Instrument Cycle only					
EL	Utility:	Electric		Receptacle		X
	Connection Type:	Junction box w/receptacle				
	Voltage (Phase):	3 Phase				
	Voltage (Nominal):	208 VAC				
	Voltage (Frequency):	60 Hz				
	Circuit Protection:	25 Amps				
*Consumption per Load:	1-2 kW-h					
	208V, 3 phase, 60 Hz, 25A circuit protection with straight blade receptacle: NEMA 15-30R; Grainger part No. 52889					
CA	Utility:	Compressed Air		Flex		X
	Connection Size/Type:	¼ Inch / MNPT				
	Pressure:	Min: 90.0 psig	Max: 110.0 psig			
	Peak Consumption:	7.1 CFM				
	*Consumption per Load:	8.8 CF				
DP	Utility:	Data Port				X
	Connection Type:	RJ45 Receptacle				
	Connection Quantity:	One (1) RJ45 Ethernet port per mach.				
	Facility Wiring:	Cat-5 or better				
Final Connection:	Patch cables for final conn. provided					
Port IP Setup:	Each RJ45 requires static IP address					

ESTIMATED EMISSIONS

CD	Utility:	Condensate		Hard Pipe	X	
	Connection Size/Type:	¾ Inch / MNPT				
	Maximum Back-Pressure:	0.0 psig				
DR	Utility:	Open Drain		4" Copper	X	
	Drain Outlet:	4.0 Inch				
	Discharge Flow Rate:	71.3 gal/min				
	Connection Type:	Indirect Drain				
EX	Medium:	Air Exhaust		Rigid Duct Fitting	X	
	Connection Size:	10.0 Inch				
	Peak Flow Rate:	1059.0 CFM				
	Duct Diameter at Connection:	8.0 Inch				
	Maximum Back-Pressure:	0.029 PSI				
Medium:	Heat Radiation		Equipment room heat radiation will vary due to steam pipe insulation by others.			
Load side radiation:	700 W					
Unload side radiation:	700 W					
Equip. room radiation:	2500 W					
Total radiation:	6400 W					
Medium:	Noise Radiation					
Maximum Radiation(Net):	< 70 dBA					

PHYSICAL SPECIFICATIONS

Parameter:	Carry-In Dimensions ¹	Usable Chamber Dim.	
Height:	6.5 in	79.0 in	¹ Largest item to be carried in is sump pan.
Width:	47.3 in	32.3 in	
Length:	126.0 in	116.0 in	
Parameter:	Weights		
Operating Weight:	6160.0 lbs		Operating Weight = Machine + Water + Two Carts
HCAI NUMBER:	OPM-0498-13		

*Values are for a "Normal Cycle".

Additional Information:

MNPT = Male Pipe Thread

For alternate utility connections, please contact Belimed.

Others must provide back flow prevention for water supply.

Others must provide service valves for steam and water supply, and recommended steam pressure gauge.

All utility supplies and connections are to be provided by others, per local code.

Belimed recommends for others to apply a liquid waterproof membrane to pit or area underneath washer/disinfector.

Pit dimensions are the required finished measurements including the application of any liquid waterproofing membrane.

TS-WD750L_RevF