



# Equipment



Engineers of Confidence.

**Belimed**  
Infection Control

# Engineers of Confidence.

Belimed stands on a long history of fine craftsmanship and precision engineering. Our vision to combine world-class, stainless-steel workmanship with washer manufacturing expertise allows us to deliver innovative products for the medical industry.

Over the past 50 years, we have become more than a medical equipment manufacturer. Today, we are a leading specialist in the field of sterile processing solutions, providing our customers with a technology-driven portfolio of integrated products and services dedicated to the sterilization, disinfection, and cleaning of medical and surgical instruments.

We collaborate with our customers to precisely identify and resolve their challenges with trusted solutions that improve their overall work environment within the Sterile Processing Department. Our complete spectrum of sterile workflow solutions includes planning and design, market-leading equipment, consumables, service support, data connectivity, education, and training.

We are a multi-talented team, united by one mission. To instill living, breathing, confidence within our customers, empowering them to advance medical care and ensure the health and safety of patients and medical personnel.

At Belimed, we are all *Engineers of Confidence*.



## Equipment

Built on the legacy of fine craftsmanship, Belimed's equipment engineers design and manufacture to the highest quality standards possible, delivering on our promise of innovative solutions to improve reliability, efficiency, and productivity in Sterile Processing Departments.

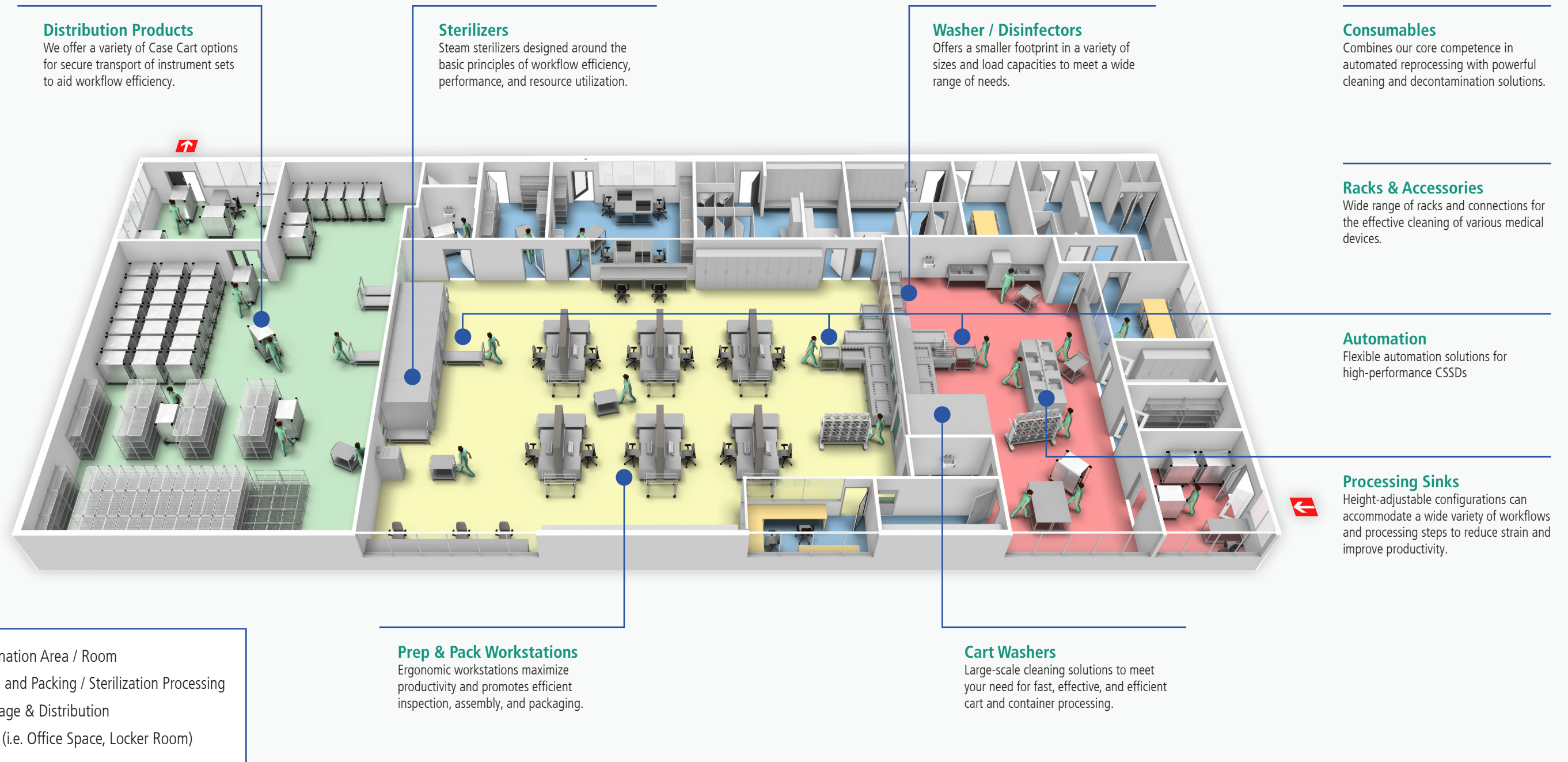
Our sterile processing equipment is inspired by a rich Swiss heritage of precision, safety, and modern ergonomics. We provide our customers with a wide range of washers, steam sterilizers, automation, and workflow equipment to maximize instrument management and reprocessing needs.

Belimed's disinfection and sterilization solutions are created to deliver beyond the needs of today. With our space-saving designs, focus on sustainability, and long-term total cost of ownership, we strive to reduce cycle times, water usage, and utility costs, while increasing equipment load capacities. All Belimed equipment is also fully supported by our environmentally friendly Belimed Protect<sup>®</sup> consumables product line and our tiered Belimed Prevent<sup>™</sup> service programs.

Our goal is to help simplify instrument decontamination and sterilization process with intuitive and easy-to-use products and services that deliver streamlined workflow solutions and superior performance and provide our customers with the flexibility to adapt to the future.



## Solutions to improve reliability, efficiency, and sustainability



# Equipment

		Cleaning Solution	SmartHub Connectivity	Operating Room*
Decontamination	<b>Processing Sinks</b> <ul style="list-style-type: none"> <li>Available in Single, Double, or Triple basin</li> <li>Ergonomic fixed and adjustable-height options</li> <li>Pegboard and accessories for organizing and optimizing workflow</li> </ul>	1 2 A		
	<b>Ultrasonic Washers</b> <ul style="list-style-type: none"> <li>User friendly control interface with password protected access levels</li> <li>Wide range of models, from Tabletop to 3-tray units</li> <li>Ergonomic loading height</li> </ul>	3		
	<b>Washer / Disinfectors</b> <ul style="list-style-type: none"> <li>Two chamber sizes, with steam or electric heating options</li> <li>Large selection of racks, flushing options and transport carts</li> <li>Small footprint with large capacities</li> </ul>	4 5 A	SmartHub Connectivity icon	Heart icon
	<b>Cart Washers / Large Scale Instrument Washers</b> <ul style="list-style-type: none"> <li>Three sizes, with fast 8-minute cycle, to match cart washing throughput needs</li> <li>Cart washer is available in steam or electric heating</li> <li>Instrument washer has a 48 instrument tray capacity for maximum throughput</li> </ul>	6 7 A	SmartHub Connectivity icon	
	<b>Drying Cabinets</b> <ul style="list-style-type: none"> <li>High performance forced air technology for gentle, yet efficient drying</li> <li>Versatile device drying accessories with high capacity</li> <li>Intuitive user interface and diagnostics</li> </ul>			
Preparation & Sterilization	<b>Prep and Pack Workstations</b> <ul style="list-style-type: none"> <li>Powered height adjustment for ergonomic processing of medical instruments</li> <li>Configurable sizes and modular accessories designed to maximize user comfort and enhance productivity</li> </ul>	A		
	<b>Steam Sterilizers</b> <ul style="list-style-type: none"> <li>Available in vertical and horizontal powered door models</li> <li>Efficient clean steam options to optimize space utilization</li> <li>Large selection of carts, racks, and accessories</li> <li>Automation options available for superior workflow</li> </ul>	A	SmartHub Connectivity icon	Heart icon
Sterile Storage	<b>Case Carts</b> <ul style="list-style-type: none"> <li>Designed for secure transport of instrument sets</li> <li>Variety of options like glass doors and clean dirty indicators to aid workflow efficiency</li> <li>Range of sizes and configurations available for varying case types</li> </ul>	A		
Operating Room	<b>Scrub Sinks</b> <ul style="list-style-type: none"> <li>Robust construction and available in single-bay through triple-bay configurations</li> <li>A full range of water and soap control options to assist different scrub methods</li> </ul>	1		Heart icon
	<b>Warming Cabinets</b> <ul style="list-style-type: none"> <li>Easy to operate and maintain with intuitive controls and data logging</li> <li>Available in single or multi-chamber models with individual temperature controls</li> <li>Range of accessories and options for easy storage and handling</li> </ul>			Heart icon

\*Equipment offered for Operating Room use.

# Consumables

The easy-to-use Belimed Protect® portfolio delivers a higher-level performance with engineered solutions that are effective, economical, and safe, that correlate to the associated cleaning steps.

1  
Multi-Enzyme Instrument Pretreatment Foam Spray

2  
Multi-Enzyme Detergent for Manual Cleaning

3  
Multi-Enzyme Detergent for Ultrasonic Cleaning

**Solutions for Pretreatment, Manual and Ultrasonic Cleaning**  
 Exclusive multi-enzyme\* formulations designed by Belimed for instrument pretreatment, manual and ultrasonic cleaning as part of our family of solutions for all cleaning processes. The subtilisin and fragrance free formulation reduces odors and risk of allergic reactions, creating a better environment for staff.

\*Protease, lipase, and amylase

4  
Multi-Enzyme Detergent for Automated Washer / Disinfectors (Concentrate)

4+  
Multi-Enzyme Detergent for Automated Washer / Disinfectors (Concentrate-PLUS)

5  
Lubricant for Alkaline Detergent for Automated Washer / Disinfectors

**Solutions for Automated Washer / Disinfectors**  
 Proprietary multi-enzyme formulations designed by Belimed to improve equipment cleaning performance in both low- and high-impingement washers. Our enzyme and lubricant solutions deliver consistently clean instruments. The subtilisin free formulation reduces odors and risk of allergic reactions, creating a better environment for staff.

6  
Neutral Non-Enzymatic Detergent for Cart Washers and Automated Washer / Disinfectors

7  
Cart Rinse

7+  
Cart Rinse Plus

**Solutions for Cart Washers**  
 Specially formulated solutions designed for the automated cart cleaning process. Our neutral, non-enzymatic detergent and cart rinse products assist in quick and effective cleaning and turnaround of surgical case carts. Concentrated formula reduces need for frequent solution replacement. Color and number coded labels make cart washer setup easy.

A  
Ready-to-Use Instrument Lubricant

A  
Descaler/Delimer

A  
Rust and Stain Remover

A  
Ophthalmic Neutral Detergent

A  
Alkaline Detergent

A  
Neutralizing Detergent

A  
Adhesive Remover

**Instrument Care and Maintenance**  
 Additional solutions that support efficient instrument preparation, preservation, and maintenance of surgical instruments and sterile processing equipment.

## Digitalization

### Data logging and more with SmartHub

SmartHub is a scalable, secure, multi-site application to connect to all your Belimed infection control medical devices and provides a front-end interface to easily manage your SPD whether you are present in your department, or not!

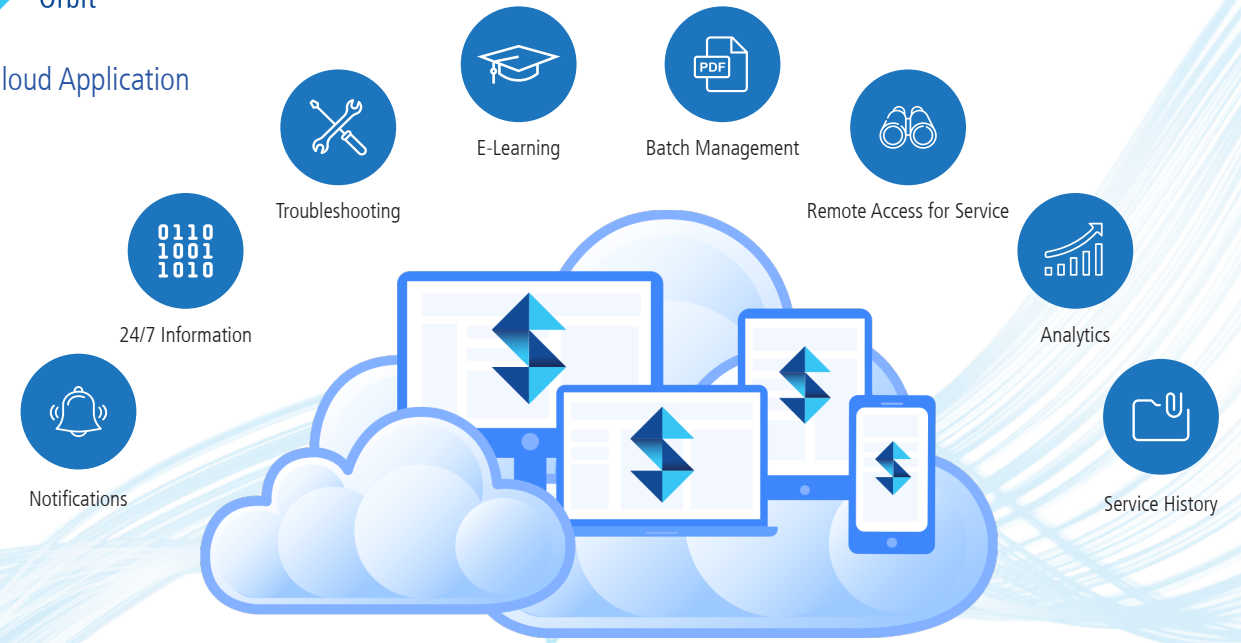
SmartHub has been designed by SPD users for SPD users, combining visualization, integration, monitoring, analytics and educational capabilities all into an intuitive and easy to use interface.

SmartHub securely interfaces with all the leading surgical instrument tracking software (ITS) systems to enable paperless, accurate and automated cycle data retention for regulatory purposes. The automated interface reduces the possibility of human error when manually scanning and entering load values into your ITS workflow.

- Integrate your Belimed machines with SPM, Censitrac, T-Doc, Sonar, SQTrack and many more instrument tracking systems.
- Get all your machine information including batch data, user manuals and more on a single-pane-of-glass in an easy to read manner, on any mobile device.
- Generate trends and analytics for equipment performance, usage, service, error history and more.
- Access interactive Belimed equipment training modules at any time.
- Resolve day-to-day equipment errors in-house with troubleshooting videos assistance.
- Collaborate better with the right information visible to all related support functions.
- Request service support directly from the application.



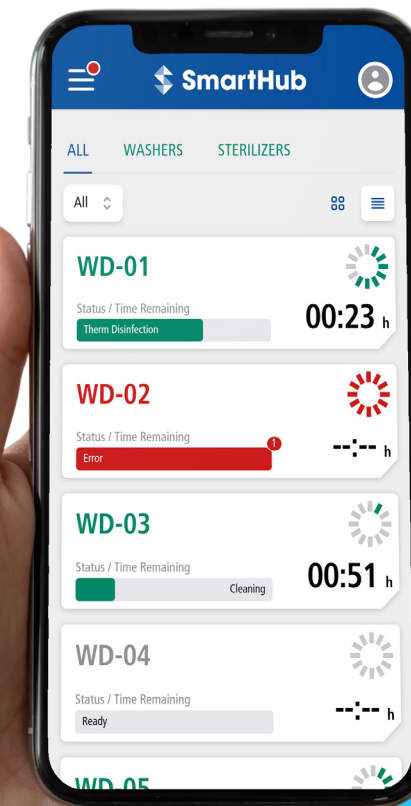
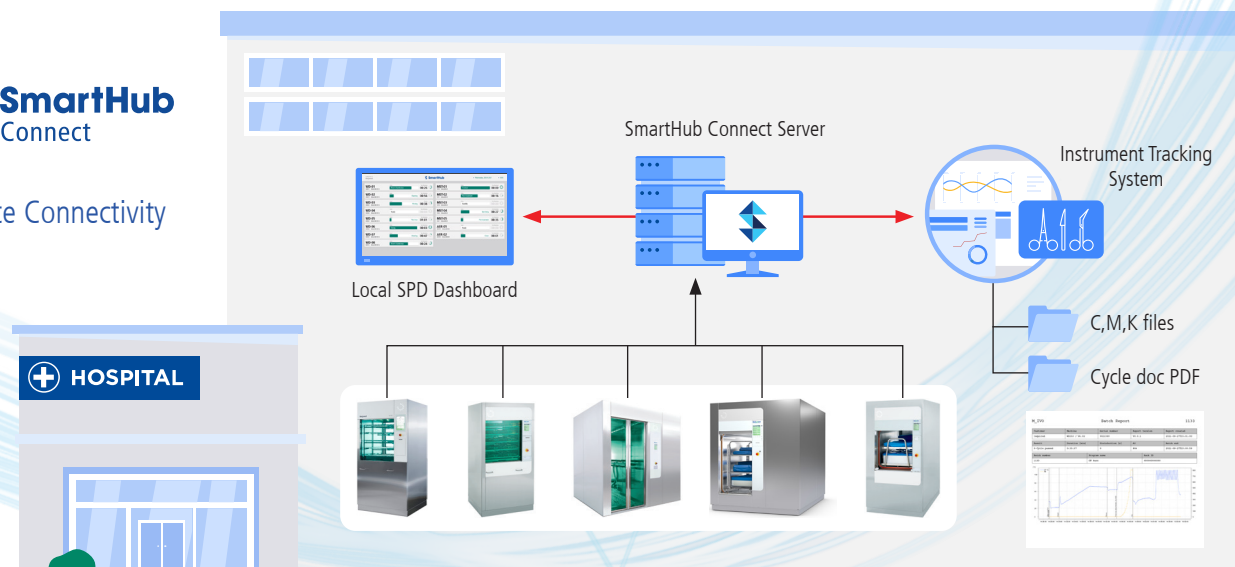
Cloud Application



SmartHub Orbit is secure and does not utilize any Protected Health Information (PHI).



On-Site Connectivity



## SPD in your pocket.

The SmartHub Orbit Dashboard offers simple transparency and shows you the most important details of all your Belimed machines at a glance.



Washer / Disinfectors

# WD 290 IQ

## Intelligence made easy

The WD 290 IQ Washer / Disinfector (WD) was developed to ensure maximum quality through efficient washing, disinfection and drying of instruments, containers and accessories while minimizing the utilization of natural resources. The WD 290 IQ is the first Washer / Disinfector that adapts to the user and their requirements – not vice versa.



WD 290 IQ

Model	Outer Dimensions H x W x D (mm)	Chamber Dimensions H x W x D (mm)	Chamber Volume Net / Gross (l)	Capacity Per Load Surgical Instruments (DIN Trays)
WD 290 IQ	72.4 x 35.4 x 37 (1840 x 900 x 940)	27 x 24.8 x 31.5 (690 x 630 x 800)	350 / 442	18

### Easy to Use

- Two large, intuitive, 10.4" touchscreens for independent operation and interface
- Patented process display gives a quick visible cycle status
- Rack program recognition starts cycle automatically
- LED illuminated chamber

### Replacement Friendly

- Same width and utilities as previous generation WD 290 and WD 250 washers
- Compatible with existing WD 290 racks, carts, and accessories

### Data Rich

- Capacity of up to 100 programmed cycles
- On board storage for at least 1000 cycles and event data
- Download stored data to the USB interface
- Integrated alert and error analysis aids service troubleshooting

### Faster Cycles

- Thermal disinfection water preheater shortens cycle time
- Advanced engineered sump provides faster heating and lower water use
- SmartFill at each step reduces fill and drain times

### Leading Performance

- Capacity of up to three trays per rack level
- Gentle instrument cycle with the speed adjustable wash pump
- Improved soft start wash pump eliminates water hammer and is gentler on instruments
- Up to five internal dosing pumps with dual flowmeter measurement
- Disinfection setpoint options from  $A_0 = 60$  to  $A_0 = 3000$
- Document cycles with optional integrated printer

### Efficiency - Water Use

- Redesigned sump requires less water
- Minimal internal piping requires less water
- Reduced RO/DI water use with lower thermal disinfect pump speed
- Each step fill level is adjustable
- Optional Storage Tank saves an average of 5.4 gal/cycle

### Connectivity with SmartHub

SmartHub connectivity and remote view is available for all large and small Belimed washers. SmartHub is a scalable software solution that securely interfaces the Belimed devices with all leading instrument tracking systems for regulatory records retention. Moreover, it allows you to tap into the full potential of your equipment to get valuable insights on usage, service, retain regulatory data and assist with informed, data-driven decisions.



For information about our full line of Racks and Accessories, see the [WD 290 / WD 290 IQ Racks and Accessories brochure](#). Available for download in PDF format.

# WD 290

## High throughput on minimal footprint

The WD 290 Washer / Disinfector (WD) offers outstanding reprocessing results and high throughput in a small space. Engineered for high performance and reliability, the WD 290 is equipped with fully automatic vertically opening sliding glass doors on both sides with smart options, full automatic rack handling, and program recognition. With an efficiently designed stainless steel chamber and unique high volume / low pressure water circulation system, it can process up to 15 DIN trays of instruments and ensure Intermediate Level Disinfection with an  $A_0 > 3000$ , per ISO 15883-1.



WD 290  
with automated  
sliding glass doors

Model	Outer Dimensions H x W x D (mm)	Chamber Dimensions H x W x D (mm)	Chamber Volume Net / Gross (l)	Capacity Per Load Surgical Instruments (DIN Trays)
WD 290	72.4 x 35.4 x 37 (1840 x 900 x 940)	27 x 24.8 x 31.5 (690 x 630 x 800)	350 / 430	18

Instrument Rack	Tray Capacity	Useable Space
1-Level	3	Bottom level: 23.6"
2-Level	6	Each level: 10.6"
3-Level	9	Each level: 6.3"
4-Level	12	Each level: 4.1"
5-Level	15	Each level: 2.7"

### Safety Features

The WD 290 reaches a thermal disinfection level of  $A_0$  3000 Standard versus the typical disinfection level of  $A_0$  600. In order to minimize the possibility of cross contamination, sensors in the system will not release the load unless all cycle parameters are met.

### Workflow Efficient

The high performance and large capacity of the washer ensure that instruments are getting to the clean side at just the right time, balancing workflow through the CSSD. The longer chamber allows processing of larger orthopedic and bariatric sets. Together, these features eliminate bottlenecks at prep and pack and streamline the department workflow.

### Resource Saving

With a combination of Belimed's SmartFill technology, which senses the load size and adjusts water use accordingly, and a soaking wash approach, the WD 290 offers low water use per tray. Innovative design makes the WD 290 completely serviceable from the front and back of the unit; no side service area required. This results in a smaller width and overall footprint, conserving another valuable resource in the CSSD: Space.

### Connectivity with SmartHub

SmartHub connectivity and remote view is available for all large and small Belimed washers. SmartHub is a scalable software solution that securely interfaces the Belimed devices with all leading instrument tracking systems for regulatory records retention. Moreover, it allows you to tap into the full potential of your equipment to get valuable insights on usage, service, retain regulatory data and assist with informed, data-driven decisions.

### Configurations & Options

- Standard Configuration:
  - Drain water cool down
  - Three (3) detergent pumps and flow meters
  - Process status display for clear visibility throughout the SPD
- Steam or Electric Heating
- Manual Loading

### Accessories

Belimed offers standard instrument racks of various levels, along with specialty racks, to accommodate all instrument reprocessing needs. The most commonly used rack is the 3-level instrument rack. Each level can hold up to 3 instrument trays. Transport carts are also available to easily move racks around the department.

For information about our full line of Racks and Accessories, see the [WD 290 / WD 290 IQ Racks and Accessories brochure](#). Available for download in PDF format.



# WD 200

## Top throughput in the smallest of spaces

The WD 200 Washer / Disinfector (WD) is engineered to provide an effective wash of instruments, containers and basins with minimal use of natural resources. With an efficiently designed stainless steel chamber and unique high volume / low pressure water circulation system, it can process up to 12 DIN trays of instruments and ensure Intermediate Level Disinfection with an A0>3000, per ISO 15883-1.



WD 200 with hinged door(s) – usable both as loading and unloading table

Model	Outer Dimensions H x W x D (mm)	Chamber Dimensions H x W x D (mm)	Chamber Volume Net / Gross (l)	Capacity Per Load Surgical Instruments (DIN Trays)
WD 200	72.4 x 26.7 x 28 (1840 x 680 x 710)	24.6 x 22.6 x 24.7 (625 x 575 x 628)	225 / 280	Up to 12

### Resource Responsible

Incorporating the same, unique Smart Fill technology and high volume flow / low pressure wash approach as our larger WD 290 washers, water use is reduced to only 25 gallons per cycle, saving thousands of precious gallons a year.

### Space Saving

While occupying less than a 27" wide by 28" deep space, the WD 200 will process anything your OR needs. It saves even more space with the ability to store detergent containers in the bottom of the unit. The hinged, glass doors eliminate the need for a transport cart, further reducing the overall footprint.

### Efficient

Running a complete wash cycle, including an effective 8 minutes of dry, in about 32 minutes, the WD 200 makes quick work of instrument washing, disinfection and drying. The bright status indicator, easily visible from across the room, lets personnel know that the cycle is complete and ready to be unloaded, further improving productivity.

### Connectivity with SmartHub

SmartHub connectivity and remote view is available for all large and small Belimed washers. SmartHub is a scalable software solution that securely interfaces the Belimed devices with all leading instrument tracking systems for regulatory records retention. Moreover, it allows you to tap into the full potential of your equipment to get valuable insights on usage, service, retain regulatory data and assist with informed, data-driven decisions.

### Full Range of Options and Accessories

The WD 200 is available in three versions, all with drying included:

- Steam heated
- Electrically heated
- Electrically heated with an integrated DI water pre-heater, to reduce cycle time



Status of the machine can be quickly assessed through the bright indicator, easily seen from across the room.



Low voltage interior illumination



Container Rack



Chemical Storage



Easy Load Rack System

# WA 290 Automation System

## Efficiency with automated loading and unloading systems

Save time and improve your workflow capacity with the WA 290 Automation System from Belimed. Automated loading and unloading reduces idle time and results in faster reprocessing and higher system capacities.

### User-friendly Design

Excellent access to the washer / disinfecter and a comprehensive overview of the workload of the system.

### Faster Process

Coordination and execution of loading and unloading by the WA 290 Automation System.

### Maximized Flexibility

Different layout configurations and various workflow approaches are available to fit the automation system into different spaces.

The loading procedures for your washer / disinfectors plays an important role in the performance of the machines and the efficiency of your facility. The Belimed WA 290 Automation System contains a smart-loading algorithm, specifically designed to provide equal loading and maximize the life of your washer / disinfectors.

Technicians and operators require fast and efficient access to both the washer / disinfecter machines and the surrounding floor area – for maintenance, service, and cleaning. The loading shuttle of the WA 290 Automation System can be simply paused and started again at a push of a button.



WA 290 CL  
Shuttle Loading

## Decontamination Side

### Shuttle Loading system (WA 290 CL)

- Load racks onto the queuing conveyor system.
- Shuttle picks up a rack and delivers to the next available washer, loads washer and starts the cycle.
- Shuttle can be "suspended" to manually load an emergency rack into an open washer.
- Various load queue capacities to meet your space and throughput needs.
- Provides a single point loading, from a cart, onto the system.

### Dedicated Conveyor Loading (WA 290 SI)

- Load racks onto the input queuing conveyor in front of a specific washer.
- Conveyor will auto load the rack into the washer, and start the cycle when the washer becomes available.
- Single rack load conveyor capacity.
- Provides a more familiar method of direct loading from a cart.



## Clean Side

### Cross Conveyor Unloading System (WA 290 CL)

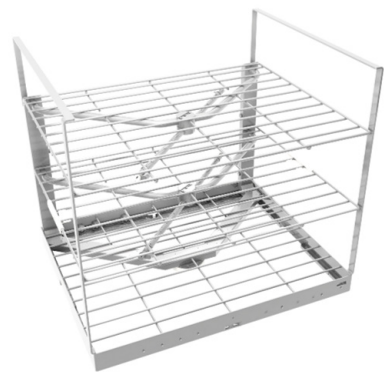
- Washer automatically unloads rack onto the cross-conveyor system.
- Rack travels to unload/load station in front of the return window.
- Full racks can be removed onto a cart at this location.
- Empty racks can be loaded to return to the Decontam side.
- Racks can also be left on the conveyor and clean instrument removed from the rack.
- Unload conveyor capacity of 1 rack.
- Provides a single point unloading and rack return.

### Dedicated Conveyor Unloading (WA 290 SO)

- Washer automatically unloads racks onto the output conveyor.
- Dock cart and then automatically unload from the conveyor to the cart.
- Empty racks are loaded onto the return line to go back to the decontam side.
- Various return line rack capacities to fit your throughput and space needs.
- Provides a more familiar method of direct unloading to a cart.

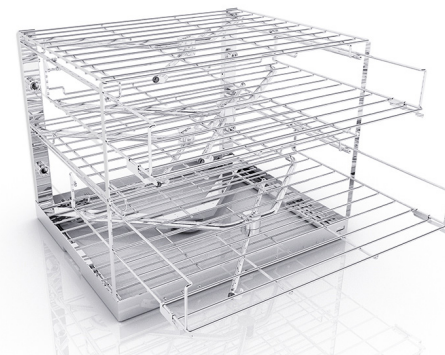
## WD 290 / WD 290 IQ Racks and Accessories

Belimed offers a wide range of racks, including flushing adapters for cannulated instruments, to meet all needs. Racks include magnet coded cycle indicators to automatically start a cycle when loaded, as well as tool-free, easy to remove, wash arms to make cleaning simple and quick.



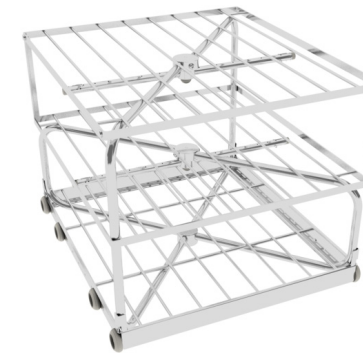
### Standard Racks

From 1 to 6 level racks, for maximum wash volume for various height trays. With maximum top height loading indicator bars.



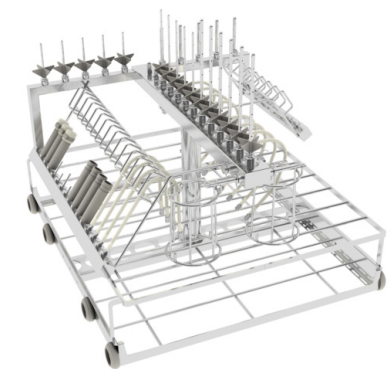
### Adjustable Racks

Remove any of the middle levels to increase the available tray height giving maximum flexibility.



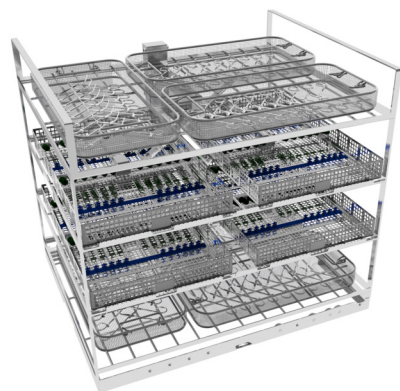
### Standard Racks

From 1 to 6 level racks, for maximum wash volume for various height trays.



### Specialty Racks

Multi instrument rack for cannulated flushing and MIS instrument hose cleaning.



### Specialty Racks

The "Mix" racks can hold up to 4 cannulated instrument trays, as well as standard trays, keeping sets together.



### Transport Cart

Secure docking to washer and locking casters for safety. Ability to store a rack under the cart.



### Rollers on Racks

All racks feature rollers to make loading and unloading on and off the fold down door smooth and easy.

---

For information about our full line of Racks and Accessories, see the [WD 290 / WD 290 IQ Racks and Accessories brochure](#). Available for download in PDF format.

---

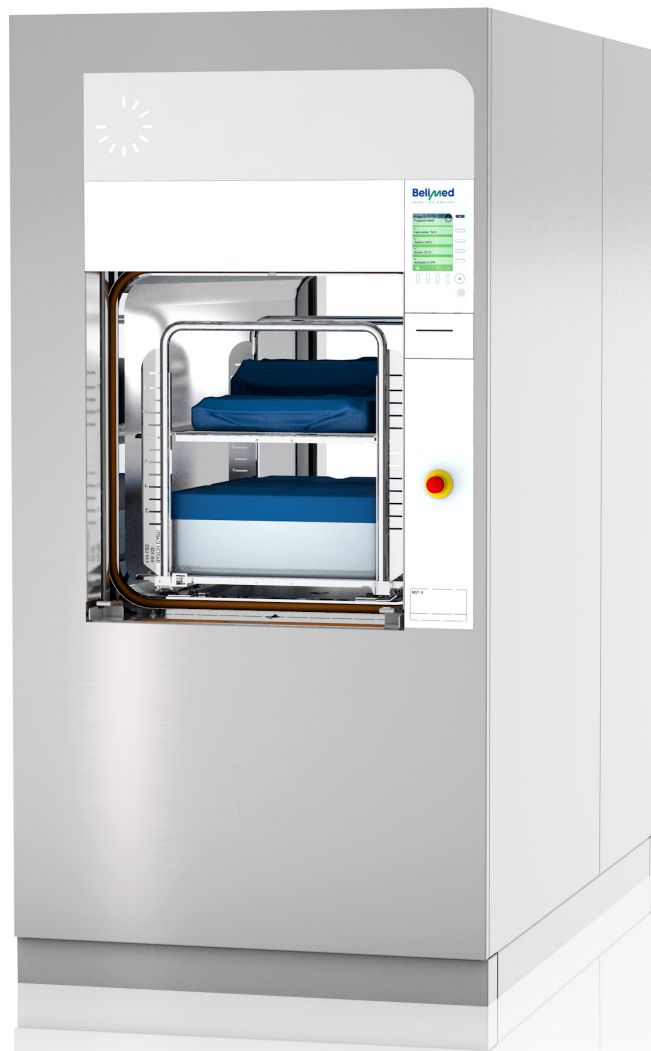


Sterilizers

# MST-V 600 Series

The standard in reliability, performance, and resource optimization

The MST-V 600 Series line of steam sterilizers are designed for efficiency and superior workflow. Designed with front service access enables several sterilizers to be installed side-by-side to minimize footprint while maximizing throughput. This, together with the appliance's compact dimensions of less than 1,000 mm in width and less than 2,000 mm in height, enables space-saving integration. The loading height from 785 mm ensures improves ergonomics during loading and unloading.



MST-V 600  
Steam Sterilizer

Model		Chamber Capacity (Tray Quantity)	Chamber Dimensions H x W x D (mm)	Chamber Volume (L)	Outer Dimensions <sup>1</sup> H x W x D (mm)
Single Door	Double Door				
MST-V 606 VS1	MST-V 606 VS2	6 (Max 25 lbs.)	26 x 26 x 27.5 (660 x 660 x 698)	305	77.5 x 39 x 43 (1968 x 990 x 1092)
MST-V 609 VS1	MST-V 609 VS2	9 (Max 25 lbs.)	26 x 26 x 39 (660 x 660 x 990)	436	77.5 x 39 x 55 (1968 x 990 x 1397)
MST-V 6012 VS1	MST-V 6012 VS2	12 (Max 25 lbs.)	26 x 26 x 53 (660 x 660 x 1346)	588	77.5 x 39 x 69 (1968 x 990 x 1752)

<sup>1</sup>Use Belimed's cut sheet for final dimensions.

### Efficient Design

The MST-V 600 Series of vertical steam sterilizers are optimized for throughput and workflow efficiency. These sterilizers can be installed side-by-side, with no side or rear service access required, making lean, extremely space efficient department designs possible.

With a capacity of up to 12 standard trays, a width of less than 40 inches, and options for fully integrated steam generators, the MST-V 600 series sterilizers are the most efficient and compact sterilizers in their class. The vertical sterilizers are ergonomically designed for ideal loading and unloading height, easing staff back strain from repetitive motion.

### Resource Optimization

Advanced engineering design including a liquid ring vacuum pump, high efficiency heat exchangers, and temperature regulated control valves help in reducing water consumption. Additional options for integration to the facility's chilled water systems will further reduce potable water consumption. The MST-V series of sterilizers uses a liquid ring vacuum pump instead of a venturi system (which can use as much as 800 gallons of water per cycle) to achieve water savings, which is standard on all Belimed steam sterilizers.

An optional steam generator can be added to the machine to reduce the need for chamber cleanings and improve the lifetime of medical instruments. The steam generator's integrated design enables the addition of clean steam without requiring additional floorspace.

Belimed offers standard instrument racks and transport carts designed to maximize the internal chamber dimensions. Optional transport system with automatic load / unload is available that allows the rack to be pushed into the sterilizer prior to starting a cycle and/or removed from the sterilizer once the cycle is complete without staff supervision. Optional pull-out shelves and foot-pedal operated sliding door are also available with smaller sized units, enabling these sterilizers to be used without transport carts to save space in small areas.

### Connectivity with SmartHub

SmartHub connectivity and remote view is available for all large and small Belimed sterilizers. SmartHub is a scalable software solution that securely interfaces the Belimed devices with all leading instrument tracking systems for regulatory records retention. Moreover, it allows you to tap into the full potential of your equipment to get valuable insights on usage, service, retain regulatory data and assist with informed, data-driven decisions.



# MST-H 9600 Series

## Best-in-class for high-volume sterilization

MST-H steam sterilizers are designed around the basic principles of workflow improvement, maximizing resource efficiency and lowering operating costs. The innovative technology reduces water consumption, or allows for a higher inlet temperature of the cooling water with corresponding energy savings.



MST-H 9600 Steam Sterilizer with automation consisting of automation unit, queue line, batch cart, and transport trolley.

Single Door	Model		Chamber Capacity (Tray Quantity)	Chamber Dimensions H x W x D (mm)	Chamber Volume (L)	Outer Dimensions <sup>1</sup> H x W x D (mm)
	Double Door					
MST-H 9612 HS1	MST-H 9612 HS2		16 (Max 25 lbs.)	43 x 26 x 55 (1080 x 660 x 1398)	691	78 x 67 x 68 (1970 x 1700 x 1714)
MST-H 9615 HS1	MST-H 9615 HS2		20 (Max 25 lbs.)	43 x 26 x 67 (1080 x 660 x 1706)	864	78 x 67 x 80 (1970 x 1700 x 2022)
MST-H 9618 HS1	MST-H 9618 HS2		24 (Max 25 lbs.)	43 x 26 x 79 (1080 x 660 x 2014)	977	78 x 67 x 92 (1970 x 1700 x 2330)

<sup>1</sup>Use Belimed's cut sheet for final dimensions.

### Maximized Throughput

Belimed's carriage loading steam sterilizers are designed with a focus on large volume reprocessing. Available in single-door or double-door configurations, these units have the flexibility to meet your demand requirements and configuration constraints.

### Superior Performance

Developed with a focus on minimizing water usage and reducing the potential for wet packs, the MST-H series has a technologically advanced vacuum pump and centrifugal steam separator.

The new rack and trolley system was designed as an integral component of the chamber, allowing up to 600 lbs. of stainless steel instruments. The shelf system has multiple adjustment settings to accommodate various sized instrument sets.

### Connectivity with SmartHub

SmartHub connectivity and remote view is available for all large and small Belimed sterilizers. SmartHub is a scalable software solution that securely interfaces the Belimed devices with all leading instrument tracking systems for regulatory records retention. Moreover, it allows you to tap into the full potential of your equipment to get valuable insights on usage, service, retain regulatory data and assist with informed, data-driven decisions.



### Accessories

Belimed offers standard instrument racks and transport carts designed to maximize the usable space inside the chamber.

### Options

**Chilled Water Systems** – A heat exchanger and cooling loop is available to integrate to chilled water systems to significantly reduce the use of potable water.

**Clean Steam Ready** – Internally mounted or externally mounted electric or steam-to-steam generators are available. These options are needed when these benefits of steam made from purified water (Clean Steam) are desired:

- Clean Steam contains far less contaminants than a typical house steam supply. This means that only trace amounts of contaminants will contact the instruments during sterilization.
- Reduced down time due to chamber cleaning
- Lower repair costs



Maximized Throughput



Superior Performance

# MST-H Option GR 9600 Series

## Perfect for large departments and reprocessing facilities

Designed around the basic principles of workflow improvement, maximizing resource efficiency and lowering operating costs. This series of steam sterilizers is best in class for high volume sterilization. The MST-H Option GR Sterilizer is a ground loader which accepts the entire trolley and load into the chamber.



Model		Chamber Capacity Tray Quantity (Weight)	Chamber Dimensions H x W x D (mm)	Chamber Volume (L)	Outer Dimensions* H x W x D (mm)
Single Door	Double Door				
GR 9612 HS1	GR 9612 HS2	16 (25 lbs. each)	42.5 x 26 x 55 (1080 x 660 x 1398)	1006	77.5 x 67 x 66.7 / 67.5 (1970 x 1700 x 1694 / 1714)
GR 9615 HS1	GR 9615 HS2	20 (25 lbs. each)	42.5 x 26 x 67 (1080 x 660 x 1706)	1228	77.5 x 67 x 79 / 79.6 (1970 x 1700 x 2002 / 2022)
GR 9618 HS1	GR 9618 HS2	24 (25 lbs. each)	42.5 x 26 x 79.25 (1080 x 660 x 2014)	1449	77.5 x 67 x 91 / 91.7 (1970 x 1700 x 2310 / 2330)

\* Use Belimed's cut sheet for exact dimensions.

### High Demand

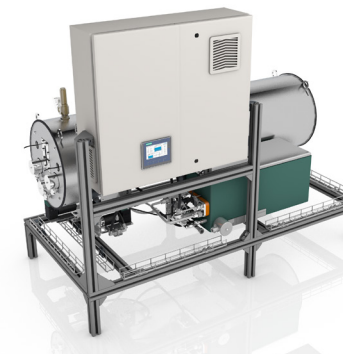
Belimed's ground loader steam sterilizers are designed with a focus on large volume reprocessing. Available in single door or double door configurations, these units have the flexibility needed for large volume facilities utilizing two zone or three zone sterile processing configurations.

### Ergonomics

Many sterile processing departments lack the real estate to store trolleys and racks. The ground loader's unique design is sized to accept the entire trolley and load in the chamber, minimizing material handling and the need for storing the trolley during the sterilization process. Automated solutions are also available to provide increased velocity through the sterilization process.

### Connectivity with SmartHub

SmartHub connectivity and remote view is available for all large and small Belimed sterilizers. SmartHub is a scalable software solution that securely interfaces the Belimed devices with all leading instrument tracking systems for regulatory records retention. Moreover, it allows you to tap into the full potential of your equipment to get valuable insights on usage, service, retain regulatory data and assist with informed, data-driven decisions.



Externally Mounted Clean Steam Generator

### Accessories

Belimed offers standard instrument racks and transport carts designed to maximize the internal chamber dimensions.

### Options

**Chilled Water Systems** – A heat exchanger and cooling loop is available to integrate to chilled water systems to significantly reduce the use of potable water.

**Automation** – Loading and unloading automation is available to automatically load and unload the trolley(s) to and from of the chamber.

**Clean Steam Ready** – Internally mounted or externally mounted electric or steam-to-steam generators are available. These options are needed when these benefits of steam made from purified water (Clean Steam) are desired:

- Clean Steam contains far less contaminants than a typical house steam supply. This means that only trace amounts of contaminants will contact the instruments during sterilization.
- Reduced down time due to chamber cleaning
- Lower repair costs



Internally Mounted Clean Steam Generator

# Transport System 16

## Designed to maximize sterilizer productivity

Designed to maximize productivity of the sterilizer to transport the instruments safely to storage area. The TS16 transport system with automatic load / unload allows the rack to be loaded into the sterilizer prior to starting a cycle and/or removed from the sterilizer once the cycle is complete without staff supervision. This frees the staff to perform other tasks without having to wait to load or unload the rack. It also helps in freeing up the unit for taking in the next load.



Model	Dimensions (H x W x L) (in/mm)	Loading Height	Max Load
Transport Cart for MST-V	25 x 39 x (35-62) (in) 637 x 1000 x (890-1565) (mm)	31 + 0.9/-0.6 (in) 790 + 25/-15 (mm)	198 – 375 (lbs) 90 – 170 (kg)
Transport Cart for MST-H	25 x 39 x (47-74) (in) 637 x 1000 x (1190-1885) (mm)	14 + /-0.8 (in) 350 +/-20 (mm)	267 – 617 (lbs) 121 – 280 (kg)
Queue Line for MST-V	30 x 33 x (33-60) (in) 657 x 838 x (843 – 1518) (mm)	N/A	N/A
Queue Line for MST-H	30 x 16 x (45-72) (in) 657 x 398 x (1143 – 1838) (mm)	N/A	N/A
Automation Unit for MST-V	30 x 33 x (2-4) (in) 657 x 838 x (65-95) (mm)	N/A	N/A
Automation Unit for MST-H	30 x 16 x (49-76) (in) 657 x 398 x (1232-1927) (mm)	N/A	N/A
Gate for MST-V Sterilizer Racks	77.5 x 31.5 x 8.75 (in) 1970 x 800 x 220 (mm)	N/A	N/A
Gate for MST-H Sterilizer Racks	77.5 x 31.5 x 8.75 (in) 1970 x 800 x 220 (mm)	N/A	N/A

### Resource Efficiency

The transport system with automatic load / unload allows the rack to be removed from the sterilizer once the cycle is complete or pushed into the chamber prior to cycle starting without additional staff supervision.

### Optimized Utilization

The transport system including the queue line allows additional batches to be queued and loaded automatically. This maximizes throughput and frees up the transport trolley for carrying other racks.

### Safe and Reliable

The transport system allows the rack to be loaded into deep chamber sterilizers and allows the extremely hot rack to be removed from the sterilizer automatically without staff supervision. The automation unit makes it safe for staff as they don't need to push or pull carts in or out of deep large chamber sterilizers.

### Improved Workflow

The sterilizer rack return gates are used on 2 door MST-V and MST-H sterilizers to pass back racks in a 3 zone SPD. By only returning the rack to the clean side from sterile stores side, the carts do not all migrate to the clean side. This improves workflow as carts are always available on both sides.



Resource Efficiency



Workflow Solution





## Ultrasonic Washers

## 565 PLUS Ultrasonic Series

### Single Chamber Ultrasonic - Wash / Rinse

The 565 PLUS Ultrasonic Cleaner is engineered to clean instruments, ranging from simple to extremely complex, through a combination of ultrasonic cavitation, heated water, and detergent. It is designed to produce maximum capacity, in terms of both total instrument weight and maximum instrument length, and maximum throughput within a compact space-saving footprint.

The 565 PLUS Ultrasonics are easy to use systems, for cleaning and rinsing a variety of instruments - from heavy orthopedic sets to cannulated instruments and daVinci endowrists. The PLUS has a two tray capacity, while the PLUS3 has a three tray capacity.



565 PLUS

#### Accurate Detergent Dosing

- Accurate, repeatable flow meter dosing
- Detergent filter before flowmeter
- Visual detergent level indicator on display
- Reset button for detergent level

#### Effective Cleaning

- Improved cannulated flushing algorithm
- Integrated water mixing valve
- Set water temperature from display
- Additional ultrasonic transducers and power with the PLUS3, 3 tray model

#### Reliable and User Friendly

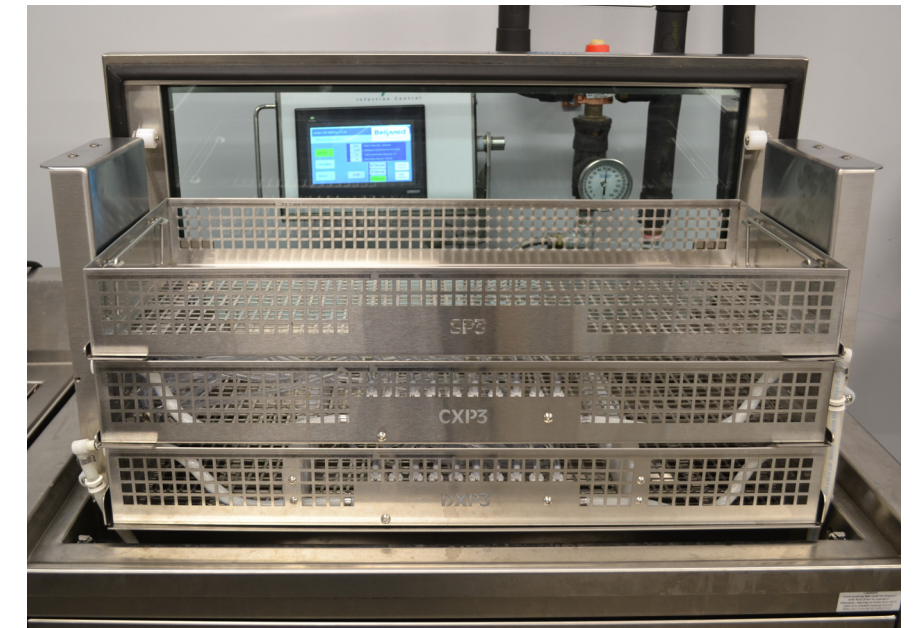
- Electronic water level sensors
- Intuitive display flow and information
- Data storage USB port
- Password protected access levels
- Optional pump for wall mounted drain
- Powered lid with 70 lb tray lift capacity

#### Safety Glass Lid

- Visually confirm instruments are submerged
- Allows manual lifting of the lid
- Damped closing feature when released

#### Instrument Connection Options

- Press fit for daVinci endowrists and cannulated devices
- Twist luer lock
- Flexible diaphragm for non-luer, cannulated devices



#### Standard Tray

- Two trays per load for PLUS
- Three trays per load for PLUS3



#### Cannulated Instrument Tray

- 10 connections per tray
- Wash and rinse flushing
- Two trays per load for PLUS
- Two trays plus additional standard tray per load for PLUS3



#### daVinci Tray

- 10 instrument capacity per tray
- Wash and rinse flushing
- Two trays per load for PLUS
- Two trays plus additional standard tray per load for PLUS3

**Manufactured for Belimed  
by Sonic Systems**

# 246 C Ultrasonic Cleaner

## Single Chamber Ultrasonic - Wash

The 246 C Ultrasonic Cleaner is engineered for efficient effective cleaning of instruments, glassware, other ware and utensils used in a healthcare setting. It is designed to combine simplicity and economy of operation with a maximum of flexibility. This configuration comes standard with an automated power lid, Aqua-lift™ tray elevator, tank heater and automatic detergent injector.



246 C

Model	Outer Dimensions H x W x D (mm)	Wash Chamber Dimensions H x W x D (mm)	Working Height Dimension (mm)
246 C	53.5 x 33 x 28.5 (1359 x 838 x 724)	15 x 24 x 13 (381 x 609 x 330)	36 (914.4)

### Highly Effective Cleaning

Unit combines the ultrasonic frequency most effective for removing heavy soil levels with a high watt density (ultrasonic power per unit of water), to produce consistently effective cleaning. Optional 10-port irrigation also helps flush evacuated debris out of cannulated instruments. Built-in chamber heater maintains optimum water temperature for cleaning chemistries.

### Optimized Ergonomics

Standard lid/basket lift is clinician friendly, eliminating the need to lift heavy case sets out of the chamber. Handy toe switch makes it easy to open the lid, even when carrying baskets or instruments.

### Solid Durability

All components are built for long life and hard service. Vacuum-brazed transducers, with a metal to metal tank bond, outlast conventional epoxy-bonded components. Water-pressure-driven lid/basket lift mechanism has fewer parts to fail than motor-driven alternatives. Solid all stainless steel frame and casing, combined with highest-quality stainless steel tank, will resist deformation and corrosion over years of use.

### Ease of Use

Intuitive touchscreen controller combines the simplicity of single-button operation with the power of a menu-driven system. Wash and detergent time, water fill level, tank flush, and sensor diagnostics are all accessible from one unified control set.

### Features

The ultrasonic console is a self-contained cleaning machine, with a single washing tank, built-in detergent dispensing and storage, and top-mounted user-interface. It is comprised of a welded frame with cover panels, and a seam-welded tank/top assembly.

- Type 304 stainless steel frame and panels, type 316 stainless steel wash and rinse tanks
- Twenty four transducers with 1000 watts of power at a frequency of 40 kHz, vacuum nickel brazed to the underside of the wash tank
- Simple touch screen user interface
- Smart water fill, user selectable to 5", 7.5", or 10"
- Standard tray elevators, which raise and lower baskets into each tank via manual toe switches, or automatically at the beginning and end of the cycle
- Automated Detergent Injection, adjustable from the user interface, with on-board tank storage
- User-defined & unit-controlled chamber solution temperature, with a 1000W external heating element
- Safety Features include door interlocks, lid switches and liquid level sensor
- Sensor diagnostics screen on the user interface provides visibility to key PLC inputs to aid in troubleshooting
- Easy service access to all plumbing, electrical relays and ultrasonic components
- Modular ultrasonic generator, for easy repair or replacement

Manufactured for Belimed by Sonic Systems

# 67T Tabletop Ultrasonic

## Tabletop Ultrasonic Wash / Rinse

The Belimed 67T Tabletop Ultrasonic Cleaner is engineered to clean instruments, ranging from simple to complex, through a combination of ultrasonic cavitation, heated water, and detergent. It is designed with a compact, space-saving tabletop footprint.

This configuration comes standard with one tray capacity, a full-function touchscreen controller, manual glass lid, tank heater, automatic detergent injection with flowmeter, cannulated irrigation system, automatic fill with water mixing valve, a tap-water rinse cycle and an optional DI rinse is available.



67T Tabletop

Model	Outer Dimensions (Lid Open) H x W x D (mm)	Wash Chamber Dimensions H x W x D (mm)	Wash Chamber Capacity
67T (Tabletop)	26.25 x 31.5 x 21 (667 x 800 x 533)	6 x 21.5 x 11.5 (152 x 546 x 292)	6.7 gallon fill level

### Effective and Efficient Cleaning

The 67T combines a 40 kHz ultrasonic frequency for removing heavy soil levels with a high wattage density (ultrasonic power/unit of water), to produce consistently effective cleaning. Available 5 or 10-port irrigation tray options flush debris out of cannulated instruments.

The 4" (102mm) H x 21.5" (546mm) W x 10.5" (267mm) D internal tray dimensions accommodates most instruments. Built-in fill water mixing, and programmable chamber temperature assure optimum water temperature for automatically injected cleaning chemistries.

The glass, see-through, lid allows visualization of the items in the chamber to ensure they are fully submerged. It is manually opened with a damped closing feature.

### Optimized Ergonomics

Manual lid lift is clinician friendly and the tray can be set on the top of the chamber for draining.

### Solid Durability

All components are built for long life. Vacuum-brazed ultrasonic transducers, with a metal to metal tank bond, outlast conventional epoxy-bonded components.

Elevated controller minimizes ingress of spilled tank water. Solid all stainless steel frame and casing, combined with highest-quality stainless steel tank, will resist corrosion and damage over years of use.

### Mobile Support Tables

#### Manual Adjustable Height Tables

- Adjustable height with a range of 30" to 34" H in 2" increments
- Marine edge to prevent water drips
- Locking casters
- Lower shelf for detergent

#### Available in Two Sizes

- Size Option 1 – Perfect for just the 67T unit:  
36" (918mm) W x 24" (610mm) D x 34" (864mm) H
- Size Option 2 – For added space to place a tray next to the unit:  
48" (1219mm) W x 24" (610mm) D x 34" (864mm) H



Three available Trays: Standard Tray and a 5 or 10-Port Flushing Tray for Cannulated Instruments



Manufactured for Belimed by Sonic Systems



Cart Washer & Large Scale  
Instrument Washer

## WD 750

### Combination large scale instrument washer and cart washer

The WD 750 sets a new standard in safety, quality, and economic efficiency. The system concept is based on the requirements of the EN ISO 15883 directive on cleaning and disinfection devices. With its large washing chamber, media coupling for an internal cleaning system and numerous options, the WD 750 is designed to effectively, and quickly, wash and dry instruments, case carts, containers, basins and utensils while using minimal water. The powerful drying unit ensures excellent drying results.



WD 750  
with sliding glass doors

Model	Chamber Size H x W x D (mm)	Carts / Cycle	Trays / Cart	Instrument Cycle Time*	Cart Wash Cycle Time*	A <sub>0</sub> Disinfection	Water / Tray
WD 750 L	79 x 32.3 x 116 (2000 x 820 x 2950)	2	24 or 48	50 - 55 minutes	15 - 18 minutes	>3000	3.5 gallons

\*Cycle time is for typical utility conditions and may vary based on the extent to which actual utilities adhere to specifications.

#### True Instrument Cleaning

The WD 750 meets the stringent instrument washing requirements of ISO 15883. The 96 oscillating spray nozzles on each side of the chamber, each with 120° fan pattern coverage, ensure a thorough and complete wash process for carts.

When washing instruments, this is combined with two wash arms on each level of the specialty instrument cart to deliver an effective soaking, penetrating wash, rinse, and thermal disinfection.

#### Fast, Efficient Cycles - Carts and Instruments

Fast, effective, cycle times and minimized water use are both achieved through a smart approach – a dual tank system. One for pre-heating, the other for storage. The pre-heating tank ensures the disinfection rinse water is at temperature and ready for use, reducing the instrument cycle time to about 55 minutes.

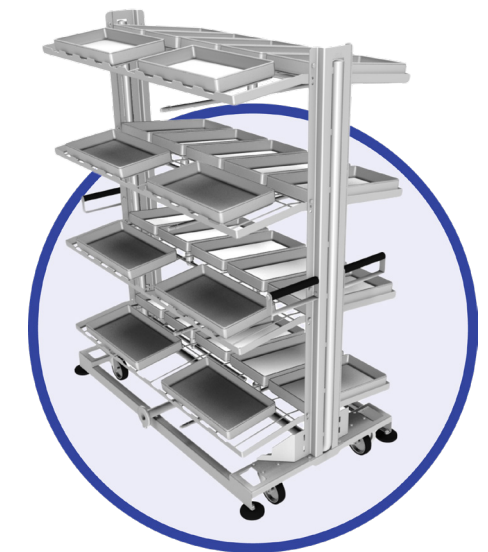
The instrument washing cycle follows best practice so 100% fresh water is used in every step. However, when processing carts, a storage tank will reclaim 80% of the wash water, for use in the next cart cycle, saving water.

#### High-Capacity Instrument Wash Cart

When it comes to processing large, or multiple, loaner sets, for example, the 24-tray capacity of the specialized instrument cart is unmatched.

While other units can accommodate only one, smaller instrument cart, the WD750 has been designed for two. The result is more than twice the throughput - 48 trays in about an hour. Clean, dry, and disinfected to an A<sub>0</sub> of 3000.

This exceptional capacity provides the ability to process a large quantity of instruments, along with their containers, all in one cycle while using only 3.5 gallons of water per tray, versus over 5.5 gallons for other units.



#### Connectivity with SmartHub

SmartHub connectivity and remote view is available for all large and small Belimed washers. SmartHub is a scalable software solution that securely interfaces the Belimed devices with all leading instrument tracking systems for regulatory records retention. Moreover, it allows you to tap into the full potential of your equipment to get valuable insights on usage, service, retain regulatory data and assist with informed, data-driven decisions.

#### Configurations & Options

- Large cycle status indicator can be seen from across the room
- Glass sliding door, with full seal, for complete visibility into the chamber
- Easy to use, intuitive user interface shortens and improves personnel training.

# CS 750

## Fast, effective, and efficient cart and container processing

The CS 750 Cart Washer is designed to effectively, and quickly, wash and dry case carts, containers, basins and utensils while using minimal water. The CS 750 is available in various chamber lengths to fit capacity and throughput needs of any SPD. The system concept of the CS 750 complies with the requirements of EN ISO 15883-7. All models are dual door.



CS 750 with service area on the right side

Parameter	CS 750 S	CS 750 M	CS 750 L
Usable chamber dimensions H x W x D, in (mm)	78.7" x 39.4" x 53.1" (2000 x 1000 x 1350)	78.7" x 39.4" x 90.6" (2000 x 1000 x 2300)	78.7" x 39.4" x 116.1" (2000 x 1000 x 2950)
Outer dimensions H x W x D, in (mm)	114.2" x 120" x 88.6" (2900 x 3050 x 2250)	114.2" x 120" x 126.0" (2900 x 3050 x 3200)	114.2" x 120" x 151.6" (2900 x 3050 x 3850)
Pit depth, in (mm)	4.7" (120)	4.7" (120)	4.7" (120)

### Workflow Efficient

Our high output dual steam heated dryers, tilting floor and high temperature rinse ensure that drying time is reduced to an absolute minimum. Carts are cleaned and dried in approximately 8 minutes so the clean side staff can focus on the instruments instead of hand drying wet carts. The large, bright status indicator, easily visible from across the room, lets personnel know that the cycle is complete and ready to be unloaded, further improving productivity. Let your washer / disinfectors take care of instruments while the CS 750, optimized for washing and drying as quickly as possible, handles your carts.

### Space Saving

Tinted glass pivot doors, compact wash tank and plumbing design increases chamber volume while reducing the overall footprint. As a result, valuable floor space is left available for additional needs of the department.

### Resource Responsible

A highly efficient tank wash system, coupled with an on-demand rinse water heater, reduces water use to about 8 gallons per cycle. This unique combination also eliminates the need to cool drain discharge water, conserving water and reducing operating costs.

### Accessories

Carts for sterilization containers and lids allow you to get more out of your cart washer and free up the washer / disinfectors for instrument loads. Improved workflow, more efficient.

### Connectivity with SmartHub

SmartHub connectivity and remote view is available for all large and small Belimed washers. SmartHub is a scalable software solution that securely interfaces the Belimed devices with all leading instrument tracking systems for regulatory records retention. Moreover, it allows you to tap into the full potential of your equipment to get valuable insights on usage, service, retain regulatory data and assist with informed, data-driven decisions.

### Container Cart Series

- Stainless steel casters with non-marking 5" diameter neoprene wheels
- Dimensions of cart: 26"W x 49"L x 67"H
- 5 container levels
- Bottom level for lids, with 6 or 12 dividers
- 20 container capacity (7" tall containers)
- Shelves are easily removable for taller containers





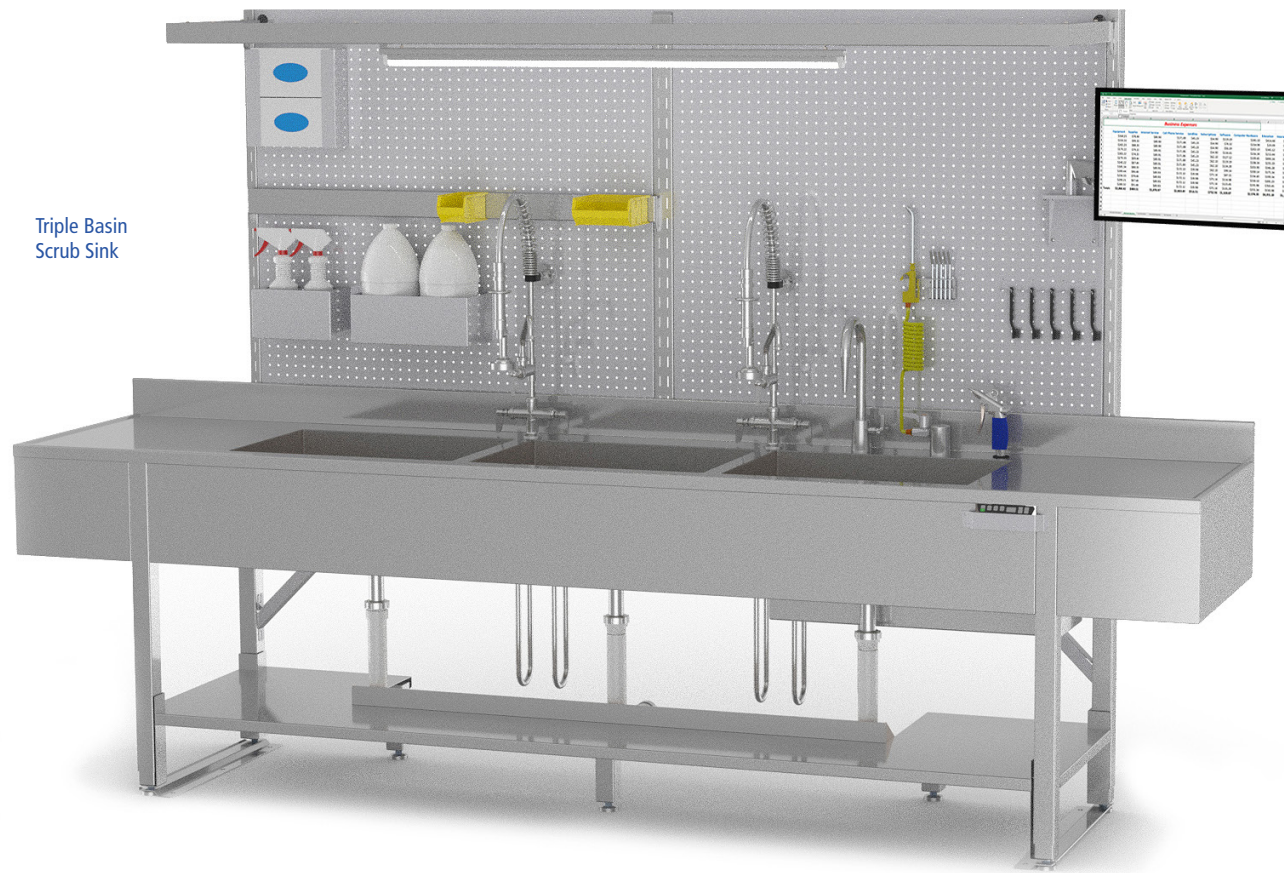
# Workflow Products



# Processing Sinks

## Safe and efficient manual cleaning of medical instruments

Belimed's all stainless, processing sinks come in single, double and triple basin sizes with options for basin size, sonic basin, faucets, guns, side splashes, and fixed or adjustable height function. Used in Sterile Processing decontamination area to perform pre-cleaning for instruments, containers and other related items.



Triple Basin Scrub Sink

Feature / Option	Single Basin Sink	Double Basin Sink	Triple Basin Sink
Number of Basins	1	2	3
Basin Widths (in)	24 or 30 (in)	24 or 30 (in)	24 or 30 (in)
Sonic Basin option	Yes	Yes	Yes
Backsplash	12" H, Sloped Top	12" H, Sloped Top	12" H, Sloped Top
Sidesplash	10" H, Left, Right or Both	10" H, Left, Right or Both	10" H, Left, Right or Both
Faucets	Pre-rinse/Gooseneck combo or Gooseneck only	Pre-rinse/Gooseneck combo or Gooseneck only	Pre-rinse/Gooseneck combo or Gooseneck only
DI Faucet	Yes	Yes	Yes
Air and Water Guns	Yes, with Tips and Mount Bracket	Yes, with Tips and Mount Bracket	Yes, with Tips and Mount Bracket
Drain Type	Lever	Lever	Lever
Fixed Height	Yes	Yes	Yes
Adjustable Height	Yes	Yes	Yes
Pegboard & Accessories	Yes	Yes	Yes
Dimensions, (in) W X D X H	72 x 30 x 37, Fixed Height (in) 72 x 30 x 34-42, Adjustable Height (in)	96 x 30 x 37, Fixed Height (in) 96 x 30 x 34-42, Adjustable Height (in)	120 x 30 x 37, Fixed Height (in) 120 x 30 x 34-42, Adjustable Height (in)

### Versatile

We offer single, double, and triple basin sinks to fit a wide variety of applications and cleaning needs. Sinks may be configured with the desired cleaning tools and workflow direction to optimize clinician efficiency during the cleaning process. An optional pegboard, with a full portfolio of accessories, improves organization and efficiency.

### Durable

Belimed's processing sinks feature rigid, heavy-gauge stainless steel construction with seam-welded components. Our sinks are built to provide years of reliable operation without excess vibration, distortion, sagging, or other damage.

### Ergonomic

Our powered, height-adjustable models can accommodate a wide range of clinician heights. These sinks are built to the AAMI HE75 2009 and ANSE/HFS 100-1988 standards and can meet the needs of the 5th through 95th percentile of users. Memory preset controls permit one-touch countertop height adjustment and each user may quickly customize the sink height to fit his/her stature.

### Optional Features

A variety of options and accessories are available to enhance our processing sinks' capabilities and workflow value.

#### Options:

- Drain Configuration (PVC or Copper)
- Side Splashes
- Cleaning Faucets
- DI Faucet
- Workflow Direction
- Air and Water Guns with Tips
- Ultrasonic Basin (Custom)

#### Pegboard with Accessories:

- LED Overhead Light
- Glovebox Holder
- Bottle Holder
- Gallon Container Holder
- Brush Holder
- Bin Rail (Small Bin and Large Bin)
- Display Arm and Mount Bracket
- Shelf



Versatile



Durable



Ergonomic

Distributed by Belimed for Mac Medical

# Prep and Pack Ergonomic Workstations

Designed to enhance workflow and productivity

Belimed's line of prep & pack workstations are designed to promote efficient, ergonomic processing and packaging of instruments and utensils. Workstations are highly configurable, available in various sizes, with different work surface materials, and with a wide array of storage, lighting, and technology support options. Frames are also available for each size, in fixed, manual adjust, and power adjustable configurations.



Power Adjustable Workstation

**Designed with clinician comfort and safety in mind, our prep and pack ergonomic workstations are ideal for a variety of instrument processing tasks.**

### Optimized Ergonomics

Manual height adjustment (ideal for the single shift/operator station), and electric powered height adjustment (best choice for multiple operator/shift applications) are available. Programmable controls that store user height settings are a standard option. Fixed-height is also available as an entry-level option. All workstations and accessories are designed to adjust to fit the needs of 5th through 95th percentile users, having been built to the ANSI/HFS 100-1988 standard.

### Ideal for Multiple Users

Power adjust models feature smooth action with simple easy to use under-counter up/down controls. Each user may select the proper working height to fit their stature, thereby ensuring hours of operation with reduced fatigue. A height-adjustable workstation allows the users to adjust to an optimized, neutral position and reduce or eliminate the ergonomically risky and non-value adding body movements while working.

### Massive Stability

All frames are fully welded of heavy-gauge steel and include back rails to prevent frame distortion and racking under load. Solid core stainless tops reduce vibration and sagging common to standard welded-gusset reinforced-top designs.

### Easy Reconfiguration

Tool-free overhead storage system connections allow shelves and bins to be quickly and easily reconfigured, to meet changing department or user needs.

### Serviceability

Motors and controls for power adjustable units drop out for quick and easy replacement with minimal downtime.



Flat Panel Display Arm



Bin Rail



Light Ring Magnifier



8 Outlet Power Bar

### Options

- Table Depths of 30" and 36"
- Table Widths of 48", 60", and 72"
- Stainless Steel and Cleanroom Laminate Work Surface Material
- Leveler Feet and Medium / Heavy Duty Casters
- Single / Double / Triple Bay Slotted Uprights
- Sterile Wrap Paper Holder Rack

### Accessories

- Storage Drawers and Stainless Steel Shelving Options
- Articulating Flat Panel Monitor / Keyboard / Mouse Pad Mounting Arm
- CPU Under-counter Mounting Bracket
- Printer Cart
- Magnetic White Board
- Steel Pegboard
- Horizontal Power Bar and Mount
- Tool Support Options
- Large, LED Ring Magnifier and Overhead Lights
- Free Standing Footrest

Distributed by Belimed for BOSTONtec

# Drying Cabinets 50 Series

Designed to maximize ease of use and device drying capacity

Belimed 50 Series Drying Cabinets are high-efficiency forced-air device drying chambers. The line includes two sizes, available in stand-alone and pass-through configurations. A range of product-specific accessories is also available.



50 Series  
Model 150 & 350

The new 50 Series line includes two sizes, available in stand-alone and pass-through configurations.

### Efficiency

Air or hand drying is time-consuming, inconvenient, and ineffective. Belimed offers high-efficiency horizontal airflow pattern drying cabinets that achieve superior drying coverage regardless of a device's position in the chamber. Fast-drying means no more waiting for key parts or accessories to air dry on a rack. Our optional pass-through designs provide easy transfer between the contaminated and clean areas without manual intervention. All cabinets are equipped with an intuitive user interface that displays important cycle statistics and notifies system updates.

### Flexibility

Since throughput requirements vary by facility, Belimed offers two chamber sizes for compact to large spaces. Large vertical internal chamber capacity and a modular design accommodate longer lumened devices positioned vertically to comply with device instructions for use. These can optionally be used with versatile device drying accessories like modular shelving for maximizing throughput. Variable drying modes can be selected based on specific instrument drying needs.

### Reliability

The drying cabinets are made from heavy-duty steel components and are built to withstand the rigors of frequent use. Interior chambers are designed to accommodate constant moisture exposure and shelves are able to support heavy loads (up to 40 lbs. each) without bending or deforming. An integrated HEPA air filtration system prevents airborne contaminants from being blown into the chamber, protecting clean instruments and accessories.

A variety of configurations, options, and accessories are available to enhance our dryers' capabilities and workflow value:

### Options

- Pass-through Configurations
- Patented LD200 Lumen Drying System
- HEPA Filtration System
- Seismic Brackets that are HCAI Pre-approved

### Accessories

#### Model 150 includes:

- 6 Perforated Stainless Steel Half-width Shelves
- 1 HEPA Filtration System with 2-stage Prefilter and Boost Fan
- 1 Removable Drip Tray for Collecting Moisture

#### Model 350 includes:

- 12 Perforated Stainless Steel Half-width Shelves
- 1 HEPA Filtration System with 2-stage Prefilter and Boost Fan
- 2 Removable Drip Trays for Collecting Moisture

Model	Outer Dimensions H x W x D in (cm)	Internal Capacity cu. ft. (m <sup>3</sup> )
50 Series - Model 150	90.5" x 30.5" x 35.5" (230 x 77.4 x 90)	23 ft <sup>3</sup> (.65 m <sup>3</sup> )
50 Series - Model 350	90.5" x 47.5" x 35.5" (230 x 120.6 x 90)	40.4 ft <sup>3</sup> (1.1 m <sup>3</sup> )

### OPTIONAL LD200 Lumen Drying System:

Using low pressure HEPA filtered air to all connected devices, the LD200 accessory provides clinically dry robotic devices and endoscopes.

- SAFE** - Protects lumened devices during the drying process
- EFFICIENT** - Stages devices to enhance department workflow
- SIMPLE** - Easy to load and operate
- FAST** - Provides clinically dry robotic devices in 30 minutes

### Operation

- Operating Temperature Rating: 140°F (60°C) Maximum
- Air Quality: HEPA Filtered with 99.97% Retention of Particles Larger than 0.3 Microns
- Air Pressure: 1 psig (6.9 kpa) Minimum, 5 psig (35 kpa) Maximum
- Circulate Air for 4 Endoscopes or Up to 10 Robotic Surgical Instruments

### Service & Installation

- Left or Right Wall Mount Configurations
- Retrofit to Existing Belimed 50 Series Drying Cabinets or Factory Installed



Distributed by Belimed for **CENORIN™**

# Belimed Protect® Pretreatment Foamer

## Designed to easily and ergonomically pretreat surgical instruments

The Belimed Protect® Pretreatment Foamer is designed to easily and ergonomically apply Belimed Protect Pretreatment to surgical instruments. The foamer includes a unique cart for mobility and two wands, one for general trays and one for cannulated instruments.



Pretreatment Foamer with two application wands

### Standard Features

- The Pretreatment Foamer allows for ergonomic application for staff, resulting in better compliance for pretreating instruments
- Two Application Wands – one for general instruments and one specially designed for cannulated instruments
- Triple the coverage of manual spraying in the same application time
- The foam created from the Pretreatment Foamer minimizes aerosolization
- The cart design holds 1 gallon or 2.5 gallon container sizes, which is more cost effective and environmentally friendly than traditional manual spray bottles

### Specifications

- Part Number: 1064361 (Unit), 1070822 (Cart)
- Working Voltage: 110-120VAC
- Power Consumption: 30W
- Frequency: 60Hz
- External Circuit Insulation Rating: E495378 (UL) SVT 3\*18AWG(0.824MM) 105°C 300V  
VW-1 C(UL) SVT 3\*18AWG(0.824MM) 105°C 300V FT1  
Insulation is grade A



Conforms to UL STD 61010-1  
Certified to CSA STD C22.2# 61010-1-12

Distributed by  
**Belimed**  
Infection Control



Easy Access Storage



Solution for Cannulated Instruments



Ergonomic Application



Triple the Coverage

# Scrub Sinks

## Your first line of defense against HAIs

Scrub sinks, and good scrub-in procedure, are the hospital's first line of defense against Healthcare-Associated Infections (HAIs). Belimed's robust scrub sinks are available in single through triple-bay configurations, as well as compact and full sized versions. A full range of water and soap control options are also available. Our Surgical Scrub Sinks are designed to assure aseptic procedures can be achieved, whether using count stroke or timed scrub methods.



3 Bay Knee Operated Scrub Sink

Model Number	Description
SS32	1 Bay Knee Operated Scrub Sink
SS64	2 Bay Knee Operated Scrub Sink
SS96	3 Bay Knee Operated Scrub Sink
SS32-IR	1 Bay Infrared Scrub Sink
SS64-IR	2 Bay Infrared Scrub Sink
SS96-IR	3 Bay Infrared Scrub Sink
SS32-IR-MB	1 Bay Deluxe Scrub Sink
SS64-IR-MB	2 Bay Deluxe Scrub Sink
SS96-IR-MB	3 Bay Deluxe Scrub Sink

### Knee Operated Surgical Scrub Sinks

Sink operation is accomplished by simply pressing the knee panel one time to activate water flow. Press again to stop flow. The soap panel works in a pumping fashion with soap being dispensed through a stainless-steel spout located near the mixing valve. The base has been designed to accommodate gallon sized soap container storage behind the knee panels.

### Infrared Operated Surgical Scrub Sinks

The infrared sensor is located on the front of each station and is activated by the user's waist. There is a 2 second on/off delay for water flow. The sensor range is 12" to 14". Both features combined eliminate activation by simply passing by. Optional knee operated or foot control soap pumps are available.

### Deluxe Surgical Scrub Sinks

Built as a hybrid, these sinks have dual controls and are equipped with infrared operated water controls, as well as a manual bypass for knee operated water control. The main operation is via the infrared sensor located between the knee panels. The knee operation for water control is on standby as a backup. In addition, the sink is also equipped with knee operated soap.

### Dimensions

All Models: 27-1/2" (699 mm) deep x 51-1/2" (1308 mm) high  
 1-Bay Sink: 32" (813 mm) wide  
 2-Bay Sink: 64" (1626 mm) wide  
 3-Bay Sink: 96" (2438 mm) wide



Scrub Sink - SS96



Scrub Sink - SS64



Scrub Sink - SS32

Distributed by Belimed for Mac Medical

# Warming Cabinets

## User friendly, durable, and versatile

Belimed’s warming cabinets are specifically designed for multiple controlled temperature storage applications. The units, available in multiple sizes from tabletop to large stand-alone, consist of a directed airflow chambers with storage shelves, door, and a digital control and monitoring package.



Multi-chamber Warming Cabinets

Model	Chamber Type	Storage Capacity (cu. ft.)	Outer Dimensions W x D x H (inches)	Shelves
SWC1518	Single	1.3	18.0 x 17.25 x 22.0	None std, 1 optional
SWC1824	Single	3.0	24.0 x 20.5 x 24.5	None std, 1 optional
SWC24	Single	5.27	30.0 x 26.5 x 24.5	1, adjustable
SWC36	Single	8.65	30.0 x 26.5 x 36.0	2, adjustable
SWC2460	Single	9.74	24.0 x 20.5 x 64.5	3, adjustable
SWC60	Single	13.05	30.0 x 20.5 x 64.5	3, adjustable
SWC72	Single	21.1	30.0 x 26.5 x 74.5	2, adjustable, 1, Fixed
DWC2460	Double	7.47 (2.65 upper/4.82 lower)	24.0 x 20.5 x 64.5	3, adjustable
DWC60	Double	9.72 (3.45 upper/6.27 lower)	30.0 x 20.5 x 64.5	3, adjustable
DWC2424	Double	13.24 (4.06 upper/9.18 lower)	24.0 x 26.5 x 74.5	3, adjustable
DWC24	Double	17.21 (5.28 upper/11.93 lower)	30.0 x 26.5 x 74.5	3, adjustable
DWC36	Double	17.64 (8.65 upper/8.99 lower)	30.0 x 26.5 x 74.5	4, adjustable
TWC24	Triple	14.01 (3.89 upper/3.72 middle/6.4 lower)	30.0 x 26.5 x 78.2	1, adjustable

### User Friendly

Easy to use touch panel controls allow the user to easily modify temperature set points but a key lockout feature prevents unauthorized alterations.

The audible/visual over-temperature alarm minimizes the possibility of overheated supplies being delivered to the surgical suite. The “Easy Log” datalogger lets users to conveniently download temperature data recorded as far back as 2 years.

### Durable

Sturdy cabinet construction and durable components ensure years of service life. Easy access electrical components greatly simplify system maintenance and periodic upkeep.

### Versatile

Multi-chamber models feature independent access doors and individual temperature controls for each chamber to allow storage of dissimilar materials in the same warmer.

### Features

- Stainless Steel Cabinet and Shelves
- Choice of Glass or Stainless Steel Doors
- Audible and Visual Over-temperature Alarm and Keyed Door / Temperature Lockout
- Integrated Data Logger with Removable USB
- Fully Insulated for Uniform Heating
- Independent Digitally Controlled Chambers

### Options

- Pass-through, Recessed, or Standalone Configurations
- Left Hinge with Right Door Swing
- Sloping Top
- Electronic Keypad Lock
- Antimicrobial Copper Alloy Handle
- Premium Version with Intuitive Touch Software and Ethernet / WiFi Capability for Remote Access

### Accessories

- Additional Stainless Steel Perforated Shelves
- Mobile Base - 2 and 4 inches
- Mobile Stand (Tabletop Models Only)
- Mobile Cabinet Stand (Tabletop Models Only)
- Roll-out Basket
- Seismic Anchoring Kits



Distributed by Belimed for Mac Medical

# Case Carts

## An integral part of the instrument transport process

Belimed closed case carts are specifically designed to be an integral part of the instrument transport process. The line includes 6 cart sizes, with a wide range of available heights, widths, and lengths.



Closed Case Carts

Model	Case Dimensions (inches)			Outer Dimensions (inches)			Doors
	Width	Depth	Height	Width	Depth	Height	
MMCCB3	40.25	25.00	32.00	45.75	26.88	39.63	2
MMCCB4	40.25	25.00	47.00	45.75	26.88	54.63	2
MMCCB6	23.63	25.00	32.00	29.13	26.88	39.63	1
MMCCB9	23.63	25.00	47.00	29.13	26.88	54.63	1
MMCCB12	36.00	25.00	32.00	41.50	26.88	39.63	2
MMCCB14	46.50	25.88	32.00	52.00	27.75	39.63	2

Units are measured by case (internal) and outer (total) dimensions. Outer dimensions include integral wrap-around bumper base.



Glass Door  
Closed Case Carts

### Stability & Durability

Rigid heavy-gauge stainless steel construction with seam-welded components and full interlocked skeleton frame assures years of reliable operation without distortion, cracks, or other damage. Cart washer compliant stainless steel sealed-bearing casters are standard.

### Capacity that fits your facility

Since not all set containers and container quantity requirements are the same, we offer carts with the widest range of internal dimensions. Minimum depth carts for space-constrained facilities, and maximum depth carts to accommodate cases with high set count. Solid stainless steel adjustable shelves designed to reduce the likelihood of tearing wraps are standard on all units.

### Features you need are standard

Positive-lock door latches keep contents secure, and push / pull door tie-backs make loading / unloading easy, and assure complete unit washing and drying. Documentation card holder, shelves, and uprated casters are all standard, not costly options.

### Features

These case carts employ seam-welded cabinet construction, with an internal structural bracing skeleton that provides additional rigidity and support.

- Type 304 Stainless Steel Construction, 16 gauge, #4 finish
- Interlocked Internal Frame Construction
- Non-marring Wrap-around Bumper
- Positive-lock Door Latches
- Heavy-duty Door Tie-back Latches
- Integrated Push Handles for Easy Maneuvering
- Fully Insulated Doors and Top
- 1 or 2 Standard 18 gauge Perforated Adjustable Stainless Shelves (Quantity Depends on Model)
- 8.5" x 11" Card / Documentation Holder
- 6" diameter All-stainless Steel Casters with Sealed Bearings
- Tamper Evidence Security Tab

Distributed by Belimed for Mac Medical

## Pass-Thru Windows

Belimed Pass-Thru Windows help to maintain high quality separation between decontamination and clean areas of the SPD.



### Features

- Spring tension can be adjusted to create a slow auto close action, ensuring that the window won't be left open.
- Shelves on both, or only one side

### Dimensions

- Wall Opening 28 3/4" W x 51" T
- Window Clearance 25" W x 23" T
- Adjustable Width for Wall Thickness (between 4 Inch and 6 Inch)





# Contact

Belimed Inc. is a leading supplier of medical and surgical instrument sterilization, disinfection, and cleaning products and services.

With 12 Belimed companies throughout Europe, North America and China, Belimed is represented worldwide by a strong network in over 80 countries.

## USA Headquarters

Belimed, Inc.  
8351 Palmetto Commerce Parkway  
Suite 101  
Ladson, SC 29456  
1.800.451.4118  
info.us@belimed.com

## Global Headquarters

Belimed AG  
Grienbachstrasse 11  
6300 Zug  
Switzerland  
+41 41 449 78 88  
info@belimed.com

REV5.2.2024\_Q0



Engineers of Confidence.

**Belimed**  
Infection Control

Belimed, Inc.  
1.800.451.4118  
www.belimed.com

