

ELD / WTD Clean Steam Generators

Product Description

The clean steam generators are designed to provide clean steam that meets the specifications from ANSI/AAMI ST108 "Water for the processing of medical devices". These can be either internally mounted on top of a steam sterilizer chamber or externally mounted in the facility's mechanical space.

Application

Provides clean steam to be used for hospital steam sterilization.

Standard Features

Construction/Design

Vessel – Stainless steel construction, type 316L

Feed Water Tank – Stainless steel construction, type 304

Display – Touch screen

Control System – PLC

Configuration

Type of Heating:

- Electrically Heated (ELD)
- Steam to Steam Heat Exchanger (WTD)

Type of Mounting:

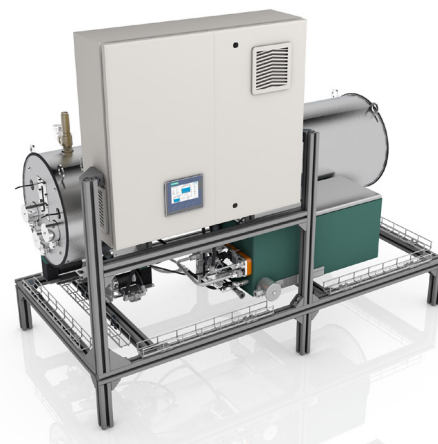
- Internally Mounted
- Externally Mounted

Standards

- UL 61010-1
- UL 61010-2-040
- ASME Section I (ELD)
- ASME CSD-1 (ELD)
- ASME Section VIII (WTD)



Internally Mounted Clean Steam Generator



Externally Mounted Clean Steam Generator



ELD / WTD Clean Steam Generators

Model	ELD / WTD 30	ELD / WTD 45	ELD / WTD 60	ELD / WTD 90
MST-V 606	X			
MST-V 609	X			
MST-V 6012		X		
MST-H 9612			X	
MST-H 9615				X
MST-H 9618				X

*Matrix showing the internally mounted clean steam generator for each steam sterilizer model.



Model	Outer Dimensions for Externally Mounted Configuration (inches)	Clean Steam Production (lbs/hr)	Volume (gallons)	Power Supply (V / Hz)
ELD 30	41.4 H x 30.9 W x 33.7 D	106	17.4	**208V / 60 Hz or 480V / 60 Hz
ELD 45	41.4 H x 30.9 W x 48.4 D	159	27.1	480V / 60 Hz
ELD 60	41.4 H x 30.9 W x 61.4 D	212	34.5	480V / 60 Hz
ELD 90	50 H x 31.5 W x 61.4 D	318	34.5	480V / 60 Hz
WTD 30	41.4 H x 30.9 W x 33.7 D	*121 - 337	17.4	208V / 60 Hz or 480V / 60 Hz
WTD 45	41.4 H x 30.9 W x 48.4 D	*160 - 415	27.1	208V / 60 Hz or 480V / 60 Hz
WTD 60	41.4 H x 30.9 W x 61.4 D	*216 - 482	34.5	208V / 60 Hz or 480V / 60 Hz
WTD 90	50 H x 31.5 W x 61.4 D	*386 - 809	34.5	208V / 60 Hz or 480V / 60 Hz

*The clean steam production of the WTD's depends on the heating steam pressure.

**208V for the ELD 30 is only available for the internally mounted configuration.

DEV12.11.2023_Q0

Engineers of Confidence.