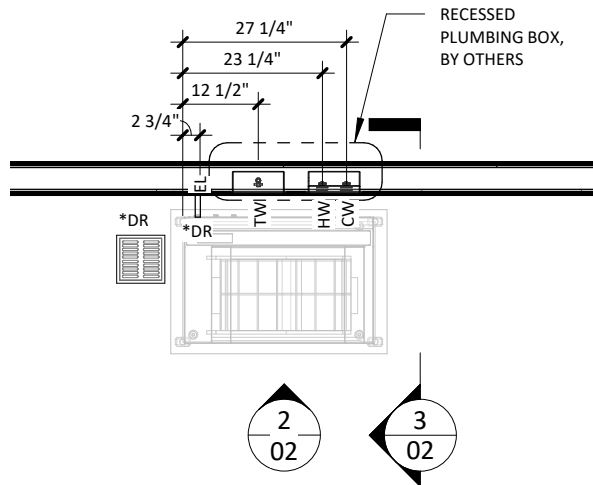
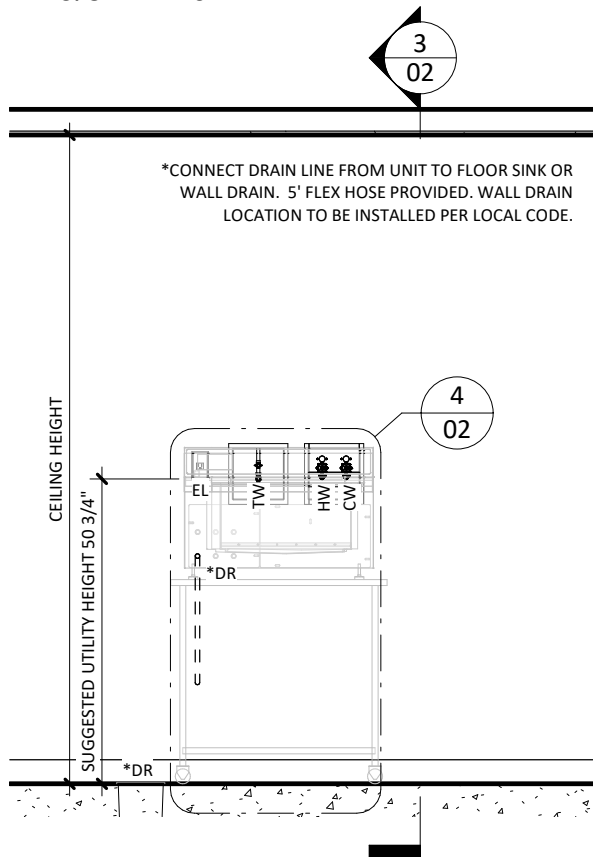


	TDS-67T_TABLETOP_REVB	67T TABLETOP ULTRASONIC TYPICAL INSTALLATION OF A 67T TABLETOP ULTRASONIC	DRAWN BY: A. JONES	
	REV: B		SCALE: NONE	
	3D VIEW		DATE: 11/22/24	PAGE: 01 OF 04

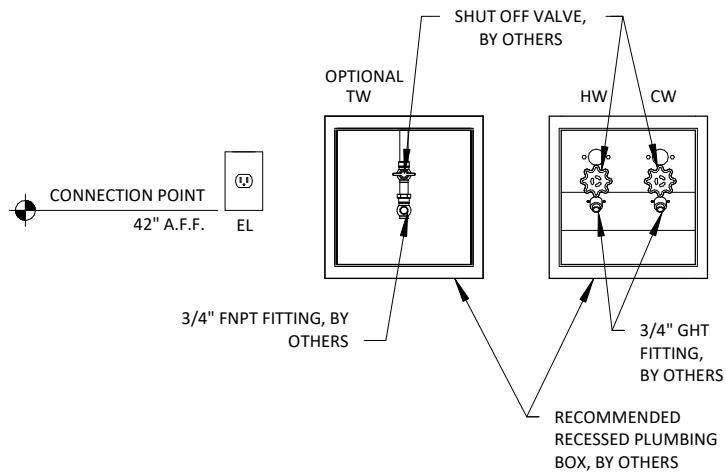


*CONNECT DRAIN LINE FROM UNIT TO FLOOR SINK OR WALL DRAIN.

1 UTILITY LAYOUT 3/8" = 1'-0"

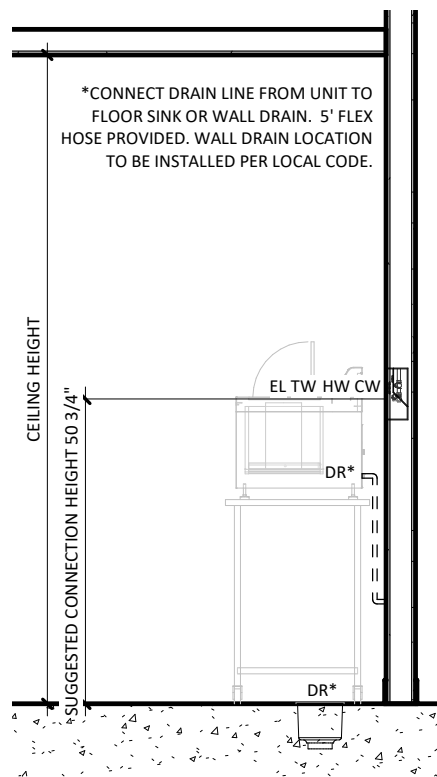


2 UTILITY FRONT ELEVATION 3/8" = 1'-0"

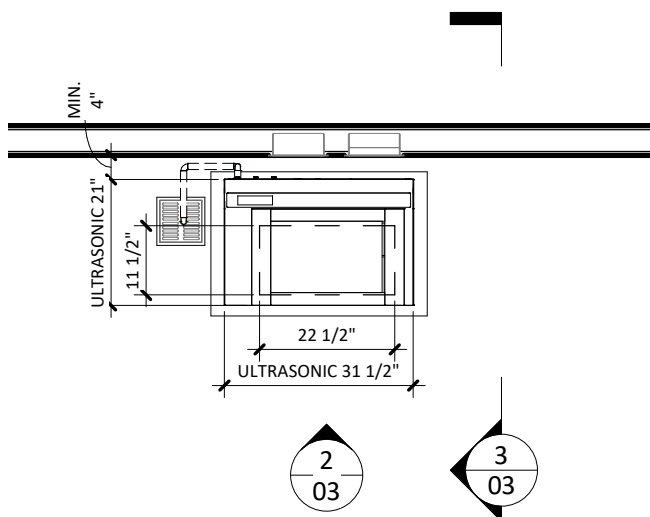


1. REFER TO EQUIPMENT, PLUMBING, MECHANICAL AND ELECTRICAL PLANS FOR UTILITY LOCATIONS.
2. SEE TECHNICAL SPECIFICATIONS FOR UTILITY SIZING, INPUT REQUIREMENTS AND FINAL CONNECTIONS.

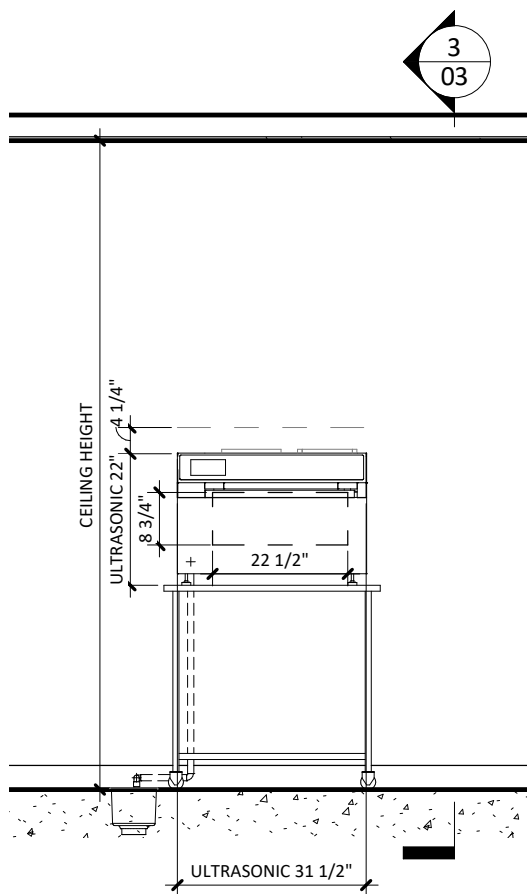
4 67T TYPICAL UTILITY LAYOUT 1" = 1'-0"



3 UTILITY SIDE ELEVATION 3/8" = 1'-0"

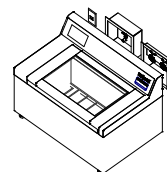


1 EQUIPMENT PLACEMENT PLAN
3/8" = 1'-0"

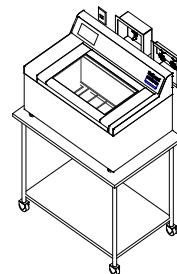


2 EQUIPMENT FRONT ELEVATION
3/8" = 1'-0"

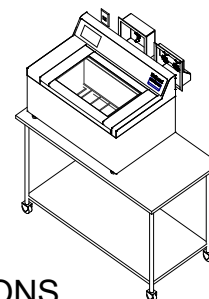
67T TABLETOP ULTRASONIC



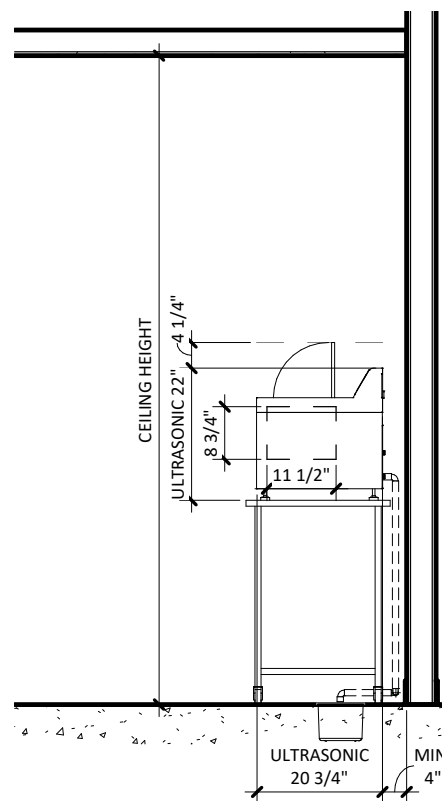
67T TABLETOP ULTRASONIC
SMALL TABLE WITH
LOCKING CASTERS
24" x 36" x 34"



67T TABLETOP ULTRASONIC
LARGE TABLE WITH
LOCKING CASTERS
24" x 48" x 34"



4 ORDER OPTIONS



3 EQUIPMENT SIDE ELEVATION
3/8" = 1'-0"

67T TABLETOP ULTRASONIC CLEANER - TECHNICAL SPECIFICATIONS

REQUIRED INPUTS

Symbol	Description	Value	Utility Notes	Connection Method	Final Utility Conn. By:	
					Others	Belimed
HW	Utility:	Hot Water	For required water quality specifications refer to Belimed document: "MeTa Water Requirement EN-US". Chlorides (mg/L) < 10 5' flex hose provided for installation.	Flex		X
	Connection Size/Type:	3/4" GHT or 1/2" FNPT				
	Water Temperature:	Min: 100°F Max: 140°F				
	Water Hardness:	Min: 25 ppm Max: 85 ppm				
	Pressure:	Min: 30.0 psig Max: 60.0 psig				
	Minimum Flow Rate:	5.0 gpm				
CW	*Consumption per Load:	Min: 6.7 gal Max: 13.4 gal	For required water quality specifications refer to Belimed document: "MeTa Water Requirement EN-US". Chlorides (mg/L) < 10 5' flex hose provided for installation.	Flex		X
	Utility:	Cold Water				
	Connection Size/Type:	3/4" GHT or 1/2" FNPT				
	Water Temperature:	Min: 40°F Max: 68°F				
	Water Hardness:	Min: 70 ppm Max: 170 ppm				
	Pressure:	Min: 30.0 psig Max: 60.0 psig				
TW	Minimum Flow Rate:	5.0 gpm	For required water quality specifications refer to Belimed document: "MeTa Water Requirement EN-US". DI Rinse Connection - Comes with Stainless Steel Hose Adapter.	Flex		X
	*Consumption per Load:	Min: 0.0 gal Max: 6.7 gal				
	Utility:	Treated Water				
	Connection Size/Type:	1/2" FNPT				
	Max. Water Temperature:	140°F				
	Pressure:	Min: 30.0 psig Max: 60.0 psig				
EL	Minimum Flow Rate:	5.0 gpm	15A, 125V, IEC 60320-1 Power Cord. NEMA 5-15R Receptacle	Receptacle		X
	*Consumption per Load:	Min: 0.0 gal Max: 6.7 gal				
	Utility:	Electric				
	Connection Type:	Receptacle				
	Voltage (Phase):	1 Phase				
	Voltage (Nominal):	120 VAC (4 Wire)				
	Circuit Protection:	15 Amps				
	Peak Consumption:	9.4 Amps				
	*Consumption per Load:	Min: 0.6 kW-h Max: 0.7 kW-h				

ESTIMATED EMISSIONS

DR	Utility:	Open or Wall Drain	5' flex hose provided. Drain pump integrated for areas with wall drain location. Provide flush mounted floor sink and trap per local code for Open Drain.	Flex	X	
	Connection Size/Type:	1/2" FNPT				
	Discharge Flow Rate:	3.5 gal/min				
	Max. Discharge Temp:	140°F				
	Medium:	Noise Radiation				
	Max. Radiation (Net):	80 dBA				

PHYSICAL SPECIFICATIONS

	Parameter:	Carry-In Dimensions*	Usable Chamber Dimensions	
	Height:	26 1/4" (Lid Up)	7 3/4"	
	Width:	31 1/2"	22 1/2"	
	Length:	21 1/8"	11 1/2"	
	Parameter:	Weights	Transport Weight = Machine + Crating Operational Wt = Machine + Water + Instruments	
	Transport Weight:	200 lbs		
	Operating Weight:	200 lbs		

Additional Information:
 GHT = Garden Hose Thread
 FNPT = Female National Pipe Thread
 Flex hose connections for HW, CW, and TW are supplied by Belimed.
 Optional Tables Available: Small 24"x 36"x 34". Large 24"x 48"x 34".

TS-67T_RevB