



MST-H 9600 Steam Sterilizer

Designed around the basic principles of workflow improvement, maximizing resource efficiency and lowering operating costs—this series of steam sterilizers is best-in-class for high volume sterilization.

Engineers of Confidence.



MST-H 9600 Steam Sterilizer

Maximized Throughput

Belimed's Carriage Loading steam sterilizers are designed with a focus on large volume reprocessing. Available in single-door or double-door configurations, these units have the flexibility to meet your demand requirements and configuration constraints.

Superior Performance

Developed with a focus on minimizing water usage and reducing the potential for wet packs, the MST-H series has the most advanced vacuum pump and centrifugal separator in the industry.

The new rack and trolley system was designed as an integral component of the chamber, allowing up to 600 lbs. of stainless steel instruments. The shelf system has multiple adjustment settings to accommodate various sized instrument sets.

Connectivity

Belimed's ICS8535 is available for all Horizontal steam sterilizers. ICS8535 is an IT solution which documents and stores cycle data onto an external storage device. The data can be integrated with existing instrument tracking software for full instrument traceability.

Options

Clean Steam ready - integrated or external steam generator is available when the benefits of contaminate free steam (Clean Steam) are desired:

- Prolonged instrument life
- Reduced down time due to chamber cleaning
- Lower repair costs

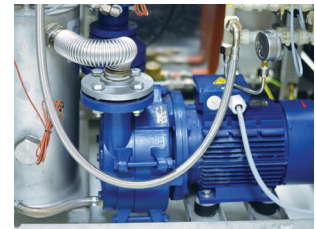
Water chilled systems – a heat exchanger and cooling loop is available to integrate to chilled water systems to significantly reduce the use of water.

Accessories

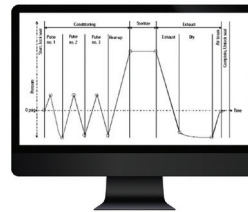
Belimed offers standard instrument racks and transport carts designed to maximize the internal chamber dimensions.



Maximized Throughput



Superior Performance



Connectivity

Model		Chamber Capacity (Tray Quantity - Max 25 lbs. each)	Chamber Dimensions (H x W x D) (in/mm)	Machine Dimensions (H x W x D) (in/mm)
Single Door	Double Door			
9612 HS1	9612 HS2	16	43 x 26 x 55 (1080 x 660 x 1398)	78 x 67 x 68 (1970 x 1700 x 1714)
9615 HS1	9615 HS2	20	43 x 26 x 67 (1080 x 660 x 1706)	78 x 67 x 80 (1970 x 1700 x 2022)
9618 HS1	9618 HS2	24	43 x 26 x 79 (1080 x 660 x 2014)	78 x 67 x 92 (1970 x 1700 x 2330)

REV10.30.2020_Q320

Engineers of Confidence.