



Inf e c t i o n C o n t r o l
www.Belimed.com (800) 457-4117

NEW CONSTRUCTION

XYZ MEDICAL CENTER - NEW SURGERY CENTER

ANYWHERE, USA



BELIMED CONFIDENTIAL DISCLAIMER
THE INFORMATION CONTAINED IN THESE DOCUMENTS IS CONFIDENTIAL, PRIVILEGED, AND ONLY FOR THE INTENDED RECIPIENT AND MAY NOT BE USED, PUBLISHED, OR REDISTRIBUTED WITHOUT THE PRIOR WRITTEN CONSENT OF BELIMED, INC.

INSTALLATION DRAWING
TITLE SHEET

XYZ MEDICAL CENTER - NEW SURGERY CENTER
ANYWHERE, USA

DATE: 04/29/2022
SCALE: NONE
DRAWN BY: A. JONES
DRAWING NO. EXAMPLE
REVISION NO. 3
SHEET: 01 OF 10

INDEX OF DRAWINGS

- 01 TITLE SHEET
- 02 EQUIPMENT SPECIFICATIONS
- 03 EQUIPMENT SPECIFICATIONS
- 04 SMARTHUB
- 05 TYPICAL DETAILS
- 06 SITE PREPARATION & PLUMBING PLANS
- 07 MECHANICAL & ELECTRICAL PLANS
- 08 EQUIPMENT PLACEMENT PLAN
- 09 UTILITY ELEVATIONS & SECTIONS
- 10 EQUIPMENT ELEVATIONS & SECTIONS



DRAWING APPROVAL - P- 108XXX

CUSTOMER MUST SIGN AND RETURN DRAWING PRIOR TO SCHEDULING OF INSTALLATION. INSTALLATION WILL NOT BEGIN UNTIL CUSTOMER HAS RETURNED AUTHORIZED DRAWING.

As an AUTHORIZED REPRESENTATIVE, I hereby CERTIFY that I have reviewed this drawing and agree to its contents. Any changes required by customer have been clearly marked on this drawing.

I further CERTIFY that I have read and understand the utility requirements that must be provided by the customer prior to installation.

DRAWING REVIEWED AND AUTHORIZED BY:

K. JONES DATE: _____
Project Manager Kendall.Jones@belimed.com
A. JONES DATE: 04/29/2022
Project Planning Amanda.Jones@belimed.com

CUSTOMER APPROVAL:

Name _____ Title _____
X Signature _____ Date _____

GENERIC SYMBOL LEGEND

- ROOM NAME**
101 ← ROOM TAG
150 SF
- 00 ← SITE PREPARATION NOTE
A ← DEMOLITION TAG
- AA ← EQUIPMENT TAG
- 1 A101 ← CALLOUT TAG
- AA 00 ← ELEVATION MARKER
- 1 A101 ← SECTION MARK

SITE VICINITY MAP (N.T.S.)

EQUIPMENT LIST

ITEM	QTY	EQUIPMENT	SUPPLEMENTS
NEW EQUIPMENT			
A1	2	WD290IQ-ME2 WASHER/DISINFECTOR	ENC292DN108D ENCLOSURE DI PRE-HEATER (x2)
C1	1	136 DRYING CABINET	
D1	1	246C ULTRASONIC CLEANER	
E1	1	PS3012035-AH TRIPLE BASIN SINK	R-L WORKFLOW 30B-30" BASINS
F1	1	BDP100 DOSING PUMP	
G1	3	PB3672 PREP & PACK TABLE	
H1	2	MST-V 6012 VS1E-ELD STERILIZER	ENC600E-2R-1 ENCLOSURE CHILLED WATER COOLING LOOP (x2)
FUTURE EQUIPMENT			
BF	1	AUTOMATED RETURN GATE	SISO2X-G01 FREE ROLLER CONVEYOR
HF	1	MST-V 6012 VS1E-ELD STERILIZER	ENC600E-1R-1 ENCLOSURE CHILLED WATER COOLING LOOP

REVISION SCHEDULE

REV. NO.	REV. DATE	DESCRIPTION

SHEET SIZE: 24" X 36"

A	B	C	D	E	F	G	H	I	J	K	L	M	N	O	P																																																																
MST-V 6012E STERILIZER (W/ INTEGRATED BOILER) - TECHNICAL SPECIFICATIONS															ITEM:	H1/HF																																																															
REQUIRED INPUTS																																																																															
1	Symbol	Description	Value	Utility Notes	Connection Method	Final Utility Conn. By:																																																																									
	DI	Utility: Deionized Water Building Side Cxn Size/Type: 1/2 inch / FNPT Pressure: Min: 30 Max: 70 psig Peak Consumption: 0.43 gal/min *Consumption per Load: 5 gal Blowdown Consumption: 20.9 gal On Demand	Deionized water or RO water is used to produce pure steam with the integrated steam generator (boiler). **Minimum Water Quality Specifications: Chlorides: < 2ppm Conductivity: 1.0uS-15.0uS pH: 5-7.5 Hardness: <2 ppm Temperature: 41-95°F	Flex		X																																																																									
2	CW	Utility: Cold Water Building Side Cxn Size/Type: 1/2 inch / FNPT Water Temperature: Min: 39.0°F Max: 68.0°F Water Hardness: Min: 0.7 ppm Max: 2.0 ppm Pressure: Min: 30 psig Max: 70 psig Peak Consumption: 4.8 gal/min *Consumption per Load: 55 gal	Cold water is used to prime condensate pump and cool the condensate. Back flow prevention must be supplied by customer, as per local code. Chlorides (mg/L): < 80 TDS: 50 - 200 ppm pH: 6.5 - 8.0	Flex		X																																																																									
3	CA	Utility: Compressed Air Building Side Cxn Size/Type: 1/4 inch / FNPT Pressure: Min: 70 Max: 100 psig Peak Consumption: 1 CFM *Consumption per Load: 10 CF	Air must be dry and oil free. Used to operate pneumatic control system.	Flex		X																																																																									
3	EL	Utility: Electric Connection Type: Receptacle Voltage (Nominal): 208 VAC Voltage (Phase): 3 Phase Voltage (Frequency): 60 Hz Circuit Protection: 10 Amps Peak Consumption: 2.3 kW *Consumption per Load: 1 kWh	Junction Box with Receptacle Straight Blade. NEMA 15-20R to NEC local codes. Grainger part No. 5C793.	Receptacle		X																																																																									
4	ELB	Utility: Electric for Boiler Connection Type: 1 1/4 inch / EMT Voltage (Nominal): 480 VAC Voltage (Phase): 3 Phase Voltage (Frequency): 60 Hz Circuit Protection: 70 Amps Peak Consumption: 49.9 kW Consumption per Load: 14 kWh	Service disconnect provided by others per local code.	Hard Wire		X																																																																									
5	DP	Utility: Data Port Connection Method: TCP/IP Ethernet to hospital network Connection Quantity: One (1) RJ45 Ethernet port per mach. Facility Wiring: *Cat-5, Cat-6 or Cat-6e wire NIC/Com Speed: 10/100 Mbps Networking Port (RJ45) Broadcast Method: Unicast MTU Size: 1500 Final Connection: Belimed provided patch cables for final connection Port IP Setup: Each RJ45 Ethernet Port with individual static IP address	Location: Ethernet port should be located within 5 ft of machine within the enclosed service area of the sterilizer. * (By others)			X																																																																									
		Utility: Equipment Area Exhaust Connection Type: Exhaust return grille	Provide sufficient air exhaust to remove 2.5 kW heat rejection.	Indirect Exhaust		X																																																																									
6	SRV1	Utility (Chamber): Safety Pressure Relief Valve Outlet size: 1 inch / MNPT	Provide connection to safety relief valve and pipe to drain, atmosphere, or as required by local code.	Hard Pipe w/ Union		X																																																																									
	SRV2	Utility (Jacket): Safety Pressure Relief Valve Outlet size: 1 inch / MNPT	Provide connection to safety relief valve and pipe to drain, atmosphere, or as required by local code.	Hard Pipe w/ Union		X																																																																									
	SRV3	Utility (Jacket): Safety Pressure Relief Valve Outlet size: 1 inch / MNPT	Provide connection to safety relief valve and pipe to drain, atmosphere, or as required by local code.	Hard Pipe w/ Union		X																																																																									
UTILITIES FOR CHILLED WATER COOLING (used for reduction of cold water consumption).																																																																															
7	CS	Utility: Chilled Water Supply Building Side Cxn Size/Type: 3/4 inch / FNPT Pressure: Min: 30 Max: 90 psig Peak Consumption: 120 kBTU/hr *Consumption per Load: 28 kBTU	Peak flow rate: 7.0 gal/min Feed water range: 39 - 59°F Chlorides: < 80 ppm Hardness: < 200 ppm	Insulated Hard Pipe		X																																																																									
	CR	Utility: Chilled Water Return Building Side Cxn Size/Type: 3/4 inch / FNPT	Pressure difference ΔP CS/CR must be greater than 7 PSIG.	Insulated Hard Pipe		X																																																																									
7	CW	Utility: Cold Water Building Side Cxn Size/Type: 1/2 inch / FNPT Water Temperature: Min: 39.0°F Max: 59.0°F Water Hardness: Min: 0.7 ppm Max: 2.0 ppm Pressure: Min: 30 psig Max: 70 psig Peak Consumption: 2.2 gal/min *Consumption per Load: 2.6 gal	Cold water is used to prime the vacuum pump. Back flow prevention must be supplied by customer as per local code. Chlorides (mg/L): < 80	Flex		X																																																																									
ESTIMATED EMISSIONS																																																																															
8	DR	Utility: Open Drain Connection Size: 1-1/4 inch Discharge Flow Rate: 5.3 gal/min *Consumption per Load: 59 gal	Provide flush mounted floor sink and trap per local code.	1-1/4" Copper pipe		X																																																																									
	DRB	Utility (Boiler): Open Drain Building Side Cxn Size/Type: 3/4 inch / FNPT Discharge Flow Rate: 2.9 gal/min Medium: Noise Radiation Radiation (Net): 65 dBA Medium: Heat Radiation Radiation (Net): 1.8 kWh	Provide flush mounted floor sink and trap per local code. Drain pipe to terminate with 90° elbow. In accordance with ISO3746: 1995 Testing Standards. Heat dissipated into service room with ambient temperature of 86°F.	3/4" Flex Hose		X																																																																									
PHYSICAL SPECIFICATIONS																																																																															
9		Parameter: Carry-In Dimensions ¹ Single Door Pass-Thru Height: 77.5 inches 77.5 inches Width: 38.5 inches 38.5 inches Length: 68.8 inches 69.8 inches Parameter: Weights Transport Weight: 2658 lbs 3044 lbs Operating Weight: 3507 lbs 3893 lbs OSHPP NUMBER: OPM-0486-13	Usable Chamber Dimensions for 12 Tray Holding Capacity 26 inches 26 inches 53.1 inches	*Machine Alone (i.e. removed from packaging) Transport Weight, with ELD = Empty Chamber + Crating Operating Weight, with ELD = Fully Loaded																																																																											
10	*Consumptions calculated under pre-vac cycle at 270°F and water temperature of 63°F. Average load/cycle time one hour. Additional Information: - MNPT = Male pipe thread -FNPT = Female pipe thread - TDS = Total Dissolved Solids - Others must provide service valves and strainers for steam and water supply. - All utility supplies and connections are customer's responsibility.																																																																														
TS-MST-V09.02_612E_RevD																																																																															
11	EQUIPMENT LIST <table border="1"> <thead> <tr> <th>ITEM</th> <th>QTY</th> <th>EQUIPMENT</th> <th>SUPPLEMENTS</th> </tr> </thead> <tbody> <tr> <td colspan="4">NEW EQUIPMENT</td> </tr> <tr> <td>A1</td> <td>2</td> <td>WD290IQ-ME2 WASHER/DISINFECTOR</td> <td>ENC292DN108D ENCLOSURE DI PRE-HEATER (x2)</td> </tr> <tr> <td>C1</td> <td>1</td> <td>136 DRYING CABINET</td> <td></td> </tr> <tr> <td>D1</td> <td>1</td> <td>246C ULTRASONIC CLEANER</td> <td></td> </tr> <tr> <td>E1</td> <td>1</td> <td>PS3012035-AH TRIPLE BASIN SINK</td> <td>R-L WORKFLOW 30B-30" BASINS</td> </tr> <tr> <td>F1</td> <td>1</td> <td>BDP100 DOSING PUMP</td> <td></td> </tr> <tr> <td>G1</td> <td>3</td> <td>PB3672 PREP & PACK TABLE</td> <td></td> </tr> <tr> <td>H1</td> <td>2</td> <td>MST-V 6012 VS1E-ELD STERILIZER</td> <td>ENC600E-2R-1 ENCLOSURE CHILLED WATER COOLING LOOP (x2)</td> </tr> <tr> <td colspan="4">FUTURE EQUIPMENT</td> </tr> <tr> <td>BF</td> <td>1</td> <td>AUTOMATED RETURN GATE</td> <td>SISO2X-G01 FREE ROLLER CONVEYOR</td> </tr> <tr> <td>HF</td> <td>1</td> <td>MST-V 6012 VS1E-ELD STERILIZER</td> <td>ENC600E-1R-1 ENCLOSURE CHILLED WATER COOLING LOOP</td> </tr> </tbody> </table> REVISION SCHEDULE <table border="1"> <thead> <tr> <th>REV. NO.</th> <th>REV. DATE</th> <th>DESCRIPTION</th> </tr> </thead> <tbody> <tr> <td> </td> <td> </td> <td> </td> </tr> <tr> <td> </td> <td> </td> <td> </td> </tr> <tr> <td> </td> <td> </td> <td> </td> </tr> <tr> <td> </td> <td> </td> <td> </td> </tr> </tbody> </table>																ITEM	QTY	EQUIPMENT	SUPPLEMENTS	NEW EQUIPMENT				A1	2	WD290IQ-ME2 WASHER/DISINFECTOR	ENC292DN108D ENCLOSURE DI PRE-HEATER (x2)	C1	1	136 DRYING CABINET		D1	1	246C ULTRASONIC CLEANER		E1	1	PS3012035-AH TRIPLE BASIN SINK	R-L WORKFLOW 30B-30" BASINS	F1	1	BDP100 DOSING PUMP		G1	3	PB3672 PREP & PACK TABLE		H1	2	MST-V 6012 VS1E-ELD STERILIZER	ENC600E-2R-1 ENCLOSURE CHILLED WATER COOLING LOOP (x2)	FUTURE EQUIPMENT				BF	1	AUTOMATED RETURN GATE	SISO2X-G01 FREE ROLLER CONVEYOR	HF	1	MST-V 6012 VS1E-ELD STERILIZER	ENC600E-1R-1 ENCLOSURE CHILLED WATER COOLING LOOP	REV. NO.	REV. DATE	DESCRIPTION												
ITEM	QTY	EQUIPMENT	SUPPLEMENTS																																																																												
NEW EQUIPMENT																																																																															
A1	2	WD290IQ-ME2 WASHER/DISINFECTOR	ENC292DN108D ENCLOSURE DI PRE-HEATER (x2)																																																																												
C1	1	136 DRYING CABINET																																																																													
D1	1	246C ULTRASONIC CLEANER																																																																													
E1	1	PS3012035-AH TRIPLE BASIN SINK	R-L WORKFLOW 30B-30" BASINS																																																																												
F1	1	BDP100 DOSING PUMP																																																																													
G1	3	PB3672 PREP & PACK TABLE																																																																													
H1	2	MST-V 6012 VS1E-ELD STERILIZER	ENC600E-2R-1 ENCLOSURE CHILLED WATER COOLING LOOP (x2)																																																																												
FUTURE EQUIPMENT																																																																															
BF	1	AUTOMATED RETURN GATE	SISO2X-G01 FREE ROLLER CONVEYOR																																																																												
HF	1	MST-V 6012 VS1E-ELD STERILIZER	ENC600E-1R-1 ENCLOSURE CHILLED WATER COOLING LOOP																																																																												
REV. NO.	REV. DATE	DESCRIPTION																																																																													



BELIMED CONFIDENTIAL DISCLAIMER
 THE INFORMATION CONTAINED IN THESE DOCUMENTS IS CONFIDENTIAL, PRIVILEGED, AND ONLY FOR THE INTENDED RECIPIENT AND MAY NOT BE USED, PUBLISHED, OR REDISTRIBUTED WITHOUT THE PRIOR WRITTEN CONSENT OF BELIMED, INC.

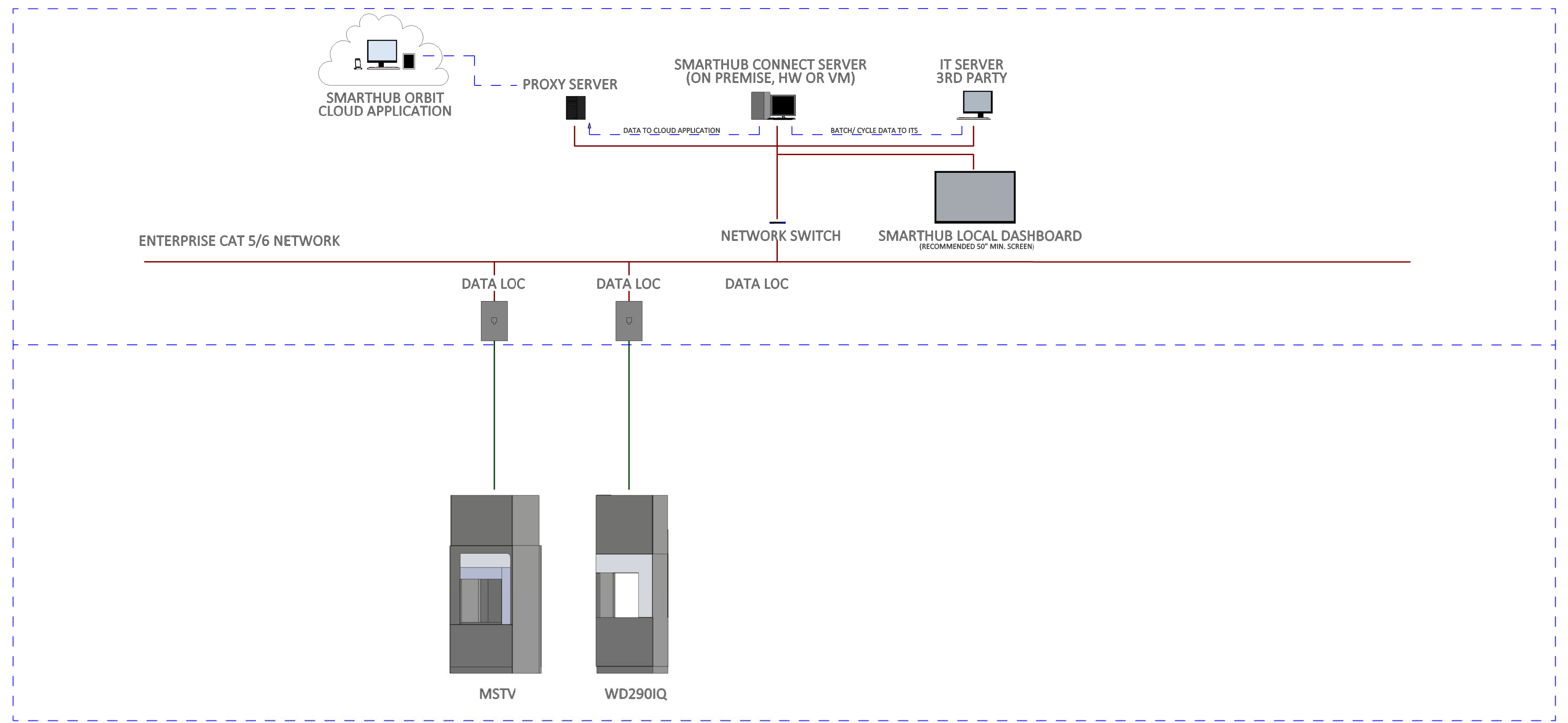
INSTALLATION DRAWING
 EQUIPMENT SPECIFICATIONS

XYZ MEDICAL CENTER - NEW SURGERY CENTER
 ANYWHERE, USA

DATE: 04/29/2022
 SCALE: NONE
 DRAWN BY: A. JONES
 DRAWING NO. EXAMPLE
 REVISION NO. 3
 SHEET: 03 OF 10

SHEET SIZE: 24" x 36"

SMART HUB CONNECT (w/ ORBIT) - TECHNICAL SPECIFICATIONS										
REQUIRED INPUTS										
Feature Description	System Requirement									
HARDWARE/ SERVER SPECIFICATIONS (SERVER PROVISIONED BY CUSTOMER)										
Recommended Processor:	Intel Xeon Processor 2.4 GHz or Higher (4 Cores or Greater)									
Recommended Operating System:	Windows 10 Pro Windows Server 2012 R2/2016/2019									
Recommended PC Type:	Server – Hardware or Virtual									
Recommended System Memory (RAM):	8 GB Minimum 16 GB Recommended or Greater (Based on OS Selected)									
Hard Drive:	Capacity, Speed, Interface: 160 GB SSD or 7,200 RPM or Higher SATA or SAS *Size may vary according to transaction storage and other variables such as archives, backups, etc.									
Hard Drives:	160 GB or Larger USB or eSATA Drive									
Browser:	Google Chrome or Microsoft Edge									
Network Connection:	100Mbps/sec or Greater GB Recommended									
Dashboard Display:	1024x768 pixels 24 bit Color or Higher Standard VGA Graphics Adapter (Display Adapter) Recommended 50" Minimum Screen for Display									
NETWORK CONFIGURATION (PROVISIONED BY CUSTOMER)										
Open Ports:	Port 443/tcp Outbound open on the Firewall (Browser Based View)									
Server Communication Ports										
Washer/Disinfectors:	Port 4001, 4002									
Washer/Disinfectors (IQ):	Port 80									
Sterilizers:	Port 2000									
Equipment NIC Speed:	10/100 Mbps									
Equipment Interface:	RJ45									
Broadcast Method:	Unicast									
MTU Size:	1500									
Duplexing:	Auto (Full or Half Duplex)									
IP Addresses:	Static IP Required									
Latency:	<15 ms									
Management:	Managed by Client IT. Server must receive regular security updates, must be protected from malicious code, attacks, and other threats. System, Configuration, Data Files & Database must be backed up regularly.									
Connections to Equipment:	Must be Configured by Client IT									
Utility Accounts:	Optional ¹									
Remote Access:	Required as needed. Belimed BeyondTrust Privileged Remote Access OR Customer Provided Agent (Ex. TeamViewer, Bomgar, AnyConnect, etc.)									
Others:	Network/ Equipment Asset Inventory Details Must Be Provided									
PHI/PII:	Not Required									
OPTIONAL SMARTHUB ORBIT CLOUD APPLICATION										
Prerequisite:	Belimed Equipment must be Configured and Paired with a running On-Site SmartHub Connect Application as well as Open Ports to allow Internet Communication.									
Internet Access:	443/tcp Outbound									
Option 1 - Direct Access IP Range for Outbound:	["13.69.71.0/25", "13.69.109.0/25", "13.95.15.251/32", "23.100.4.253/32", "23.100.8.130/32", "40.113.153.50/32", "40.113.176.160/27", "40.113.176.192/27", "40.113.177.0/24", "40.118.27.192/32", "51.144.118.31/32", "52.236.189.128/25", "2603:1020:206:402::300/123", "2603:1020:206:802::240/123", "2603:1020:206:c02::240/123"]									
Option 2 - Proxy	Proxy (can be configured on the server or in SmartHub Connect) The proxy need to allow access to Internet for 443/tcp outbound for the following hosts using https and websockets (wss).									
	<table border="1"> <thead> <tr> <th>Environment</th> <th>IoTHub</th> <th>Storage</th> </tr> </thead> <tbody> <tr> <td>PROD</td> <td>iot-prod-sho-be-1.azure-devices.net</td> <td>stblobprodshobe1.blob.core.windows.net</td> </tr> <tr> <td>TEST</td> <td>iot-test-sho-be-1.azure-devices.net</td> <td>stblobtestshobe1.blob.core.windows.net</td> </tr> </tbody> </table>	Environment	IoTHub	Storage	PROD	iot-prod-sho-be-1.azure-devices.net	stblobprodshobe1.blob.core.windows.net	TEST	iot-test-sho-be-1.azure-devices.net	stblobtestshobe1.blob.core.windows.net
Environment	IoTHub	Storage								
PROD	iot-prod-sho-be-1.azure-devices.net	stblobprodshobe1.blob.core.windows.net								
TEST	iot-test-sho-be-1.azure-devices.net	stblobtestshobe1.blob.core.windows.net								
Additional Information: *User needs to have "Logon as a Service" Permissions. Please Provide this to your Belimed Service Representative at your earliest convenience. TS-SMARTHUB_RevA										



EQUIPMENT LIST			
ITEM	QTY	EQUIPMENT	SUPPLEMENTS
NEW EQUIPMENT			
A1	2	WD290IQ-ME2 WASHER/DISINFECTOR	ENC292DN108D ENCLOSURE DI PRE-HEATER (x2)
C1	1	136 DRYING CABINET	
D1	1	246C ULTRASONIC CLEANER	
E1	1	PS3012035-AH TRIPLE BASIN SINK	R-L WORKFLOW 30B-30" BASINS
F1	1	BDP100 DOSING PUMP	
G1	3	PB3672 PREP & PACK TABLE	
H1	2	MST-V 6012 VS1E-ELD STERILIZER	ENC600E-2R-1 ENCLOSURE CHILLED WATER COOLING LOOP (x2)
FUTURE EQUIPMENT			
BF	1	AUTOMATED RETURN GATE	SISO2X-G01 FREE ROLLER CONVEYOR
HF	1	MST-V 6012 VS1E-ELD STERILIZER	ENC600E-1R-1 ENCLOSURE CHILLED WATER COOLING LOOP
REVISION SCHEDULE			
REV. NO.	REV. DATE	DESCRIPTION	

Belimed
Infection Control

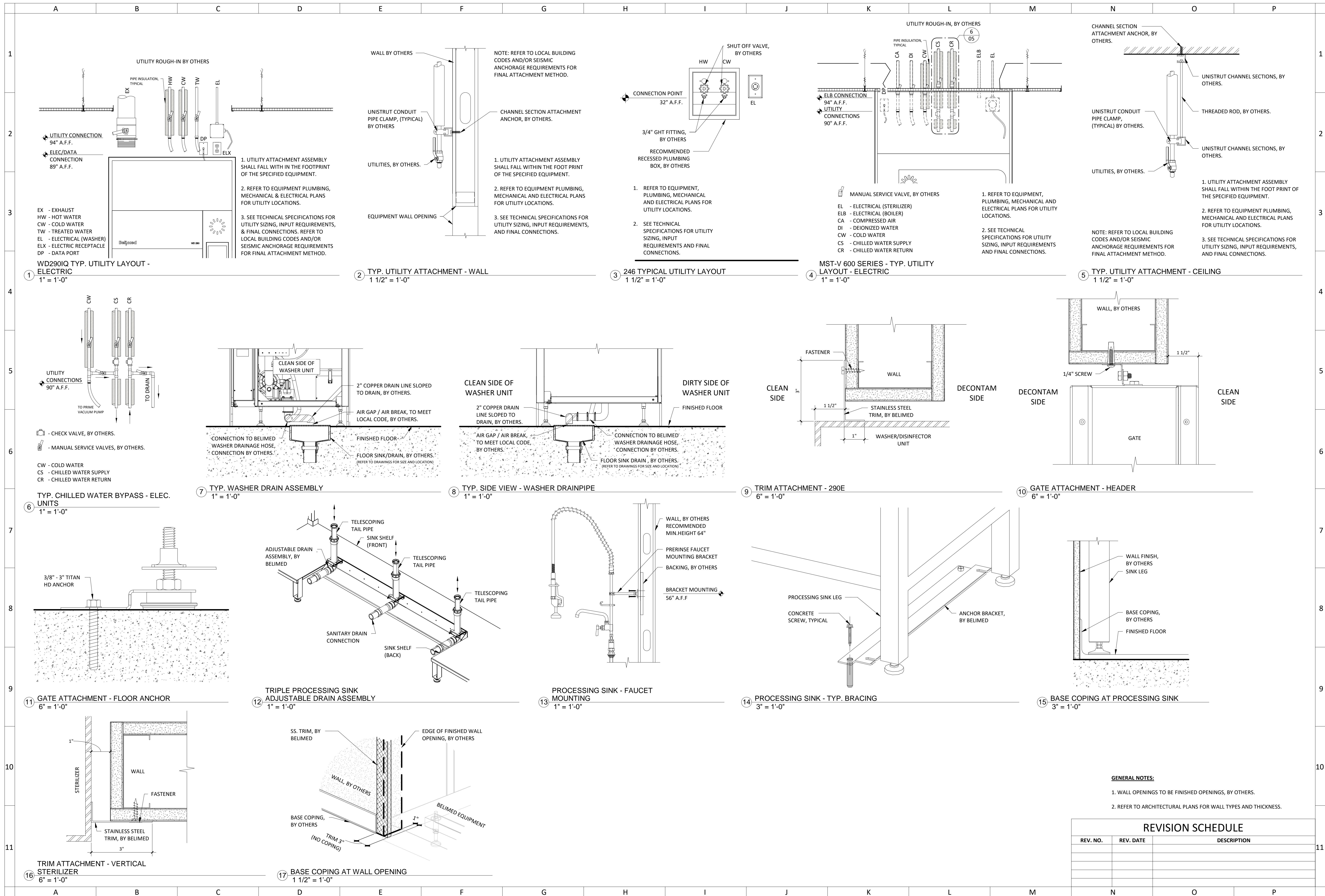
BELIMED CONFIDENTIAL DISCLAIMER
THE INFORMATION CONTAINED IN THESE DOCUMENTS IS CONFIDENTIAL, PRIVILEGED, AND ONLY FOR THE INTENDED RECIPIENT AND MAY NOT BE USED, PUBLISHED, OR REDISTRIBUTED WITHOUT THE PRIOR WRITTEN CONSENT OF BELIMED, INC.

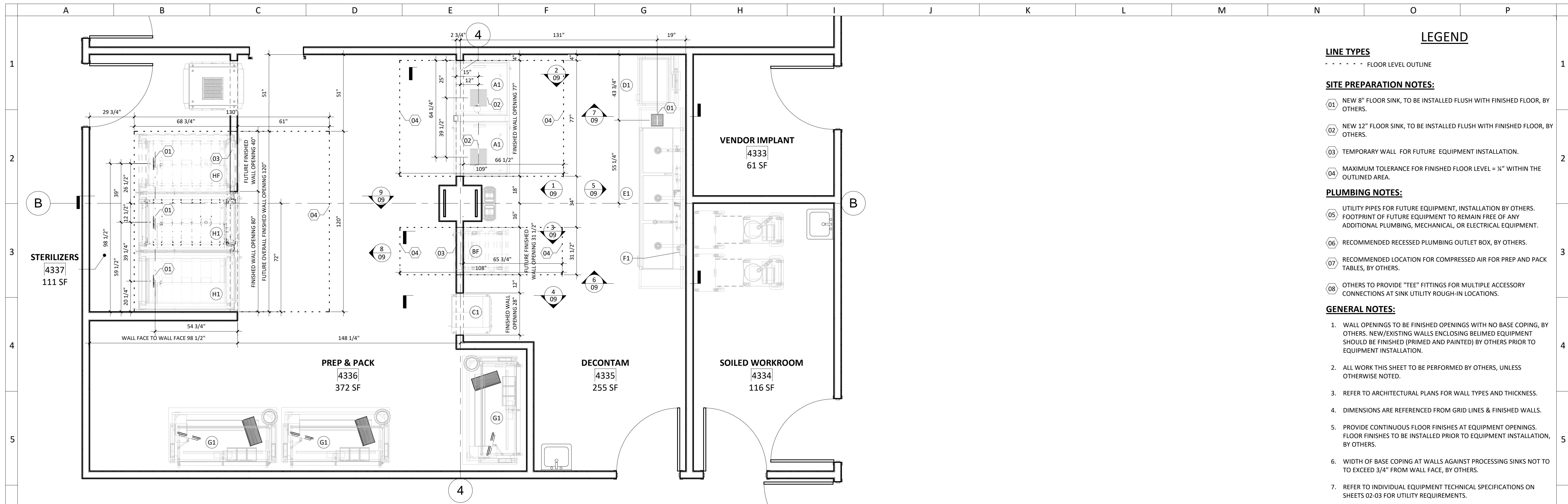
INSTALLATION DRAWING
SMARTHUB

XYZ MEDICAL CENTER - NEW SURGERY CENTER
ANYWHERE, USA

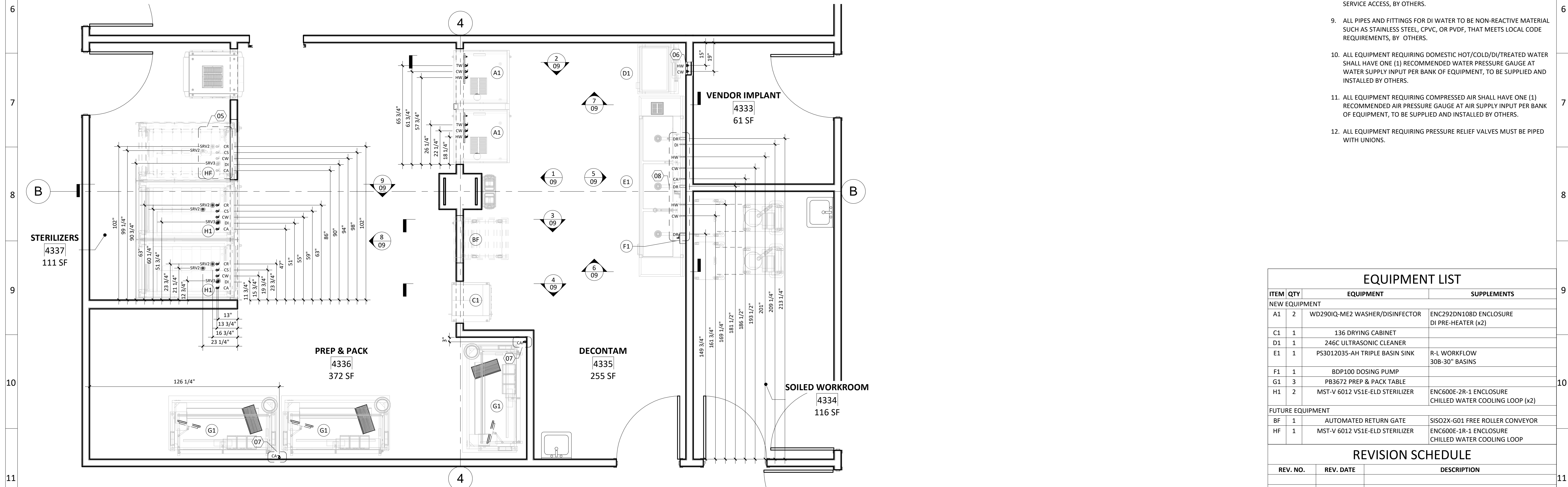
DATE: **04/29/2022**
SCALE: **1/4" = 1'-0"**
DRAWN BY: **A. JONES**
DRAWING NO. **EXAMPLE**
REVISION NO. **3**
SHEET: **04**
OF 10

DATE: **04/29/2022**
SCALE: **1/4" = 1'-0"**
DRAWN BY: **A. JONES**
DRAWING NO. **EXAMPLE**
REVISION NO. **3**
SHEET: **04**
OF 10





1 SITE PREPARATION PLAN
3/8" = 1'-0"



2 PLUMBING PLAN
3/8" = 1'-0"

LEGEND

LINE TYPES

--- FLOOR LEVEL OUTLINE

SITE PREPARATION NOTES:

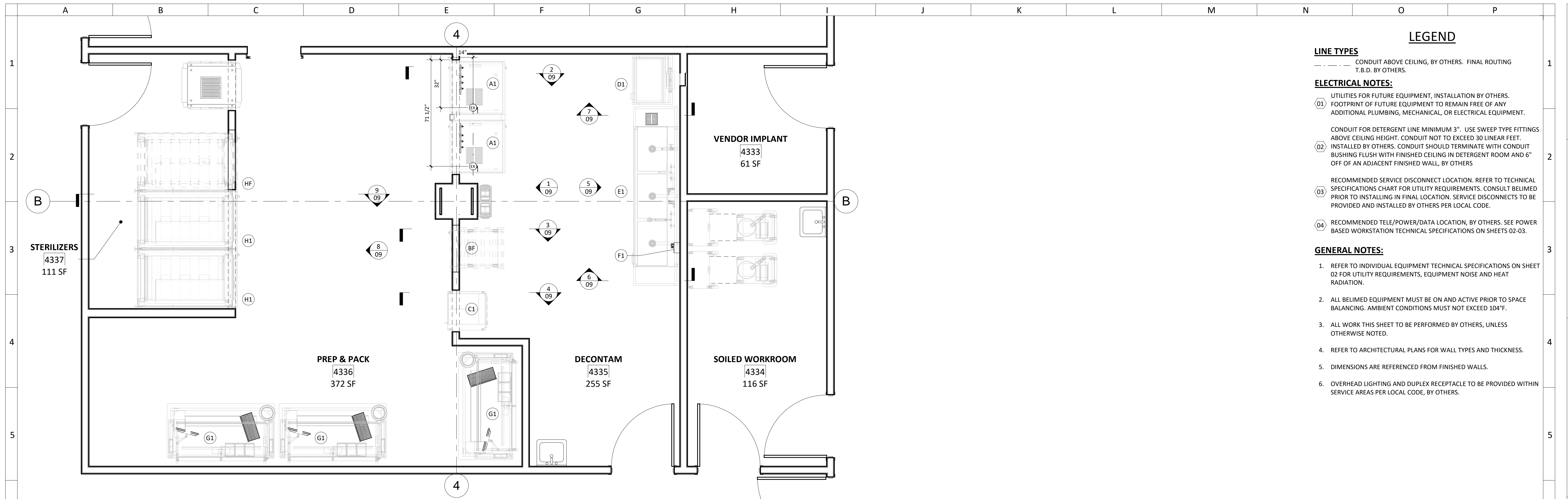
- 01 NEW 8" FLOOR SINK, TO BE INSTALLED FLUSH WITH FINISHED FLOOR, BY OTHERS.
- 02 NEW 12" FLOOR SINK, TO BE INSTALLED FLUSH WITH FINISHED FLOOR, BY OTHERS.
- 03 TEMPORARY WALL FOR FUTURE EQUIPMENT INSTALLATION.
- 04 MAXIMUM TOLERANCE FOR FINISHED FLOOR LEVEL = 3/4" WITHIN THE OUTLINED AREA.
- PLUMBING NOTES:**
- 05 UTILITY PIPES FOR FUTURE EQUIPMENT, INSTALLATION BY OTHERS. FOOTPRINT OF FUTURE EQUIPMENT TO REMAIN FREE OF ANY ADDITIONAL PLUMBING, MECHANICAL, OR ELECTRICAL EQUIPMENT.
- 06 RECOMMENDED RECESSED PLUMBING OUTLET BOX, BY OTHERS.
- 07 RECOMMENDED LOCATION FOR COMPRESSED AIR FOR PREP AND PACK TABLES, BY OTHERS.
- 08 OTHERS TO PROVIDE "TEE" FITTINGS FOR MULTIPLE ACCESSORY CONNECTIONS AT SINK UTILITY ROUGH-IN LOCATIONS.

GENERAL NOTES:

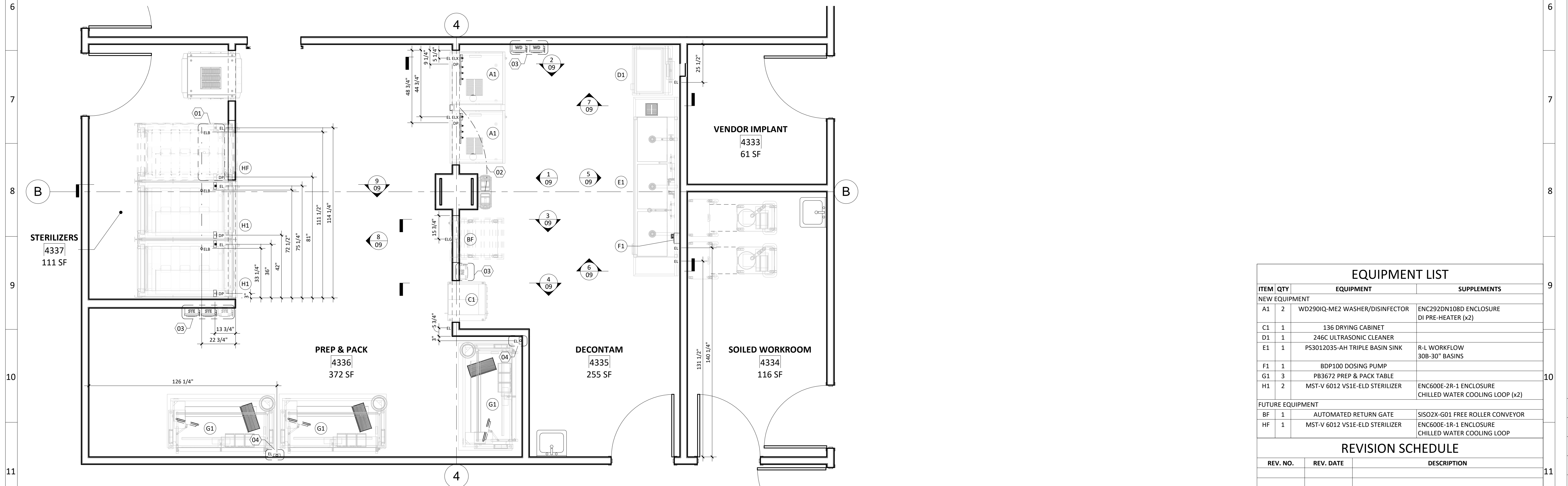
1. WALL OPENINGS TO BE FINISHED OPENINGS WITH NO BASE COPING, BY OTHERS. NEW/EXISTING WALLS ENCLOSING BELIMED EQUIPMENT SHOULD BE FINISHED (PRIMED AND PAINTED) BY OTHERS PRIOR TO EQUIPMENT INSTALLATION.
2. ALL WORK THIS SHEET TO BE PERFORMED BY OTHERS, UNLESS OTHERWISE NOTED.
3. REFER TO ARCHITECTURAL PLANS FOR WALL TYPES AND THICKNESS.
4. DIMENSIONS ARE REFERENCED FROM GRID LINES & FINISHED WALLS.
5. PROVIDE CONTINUOUS FLOOR FINISHES AT EQUIPMENT OPENINGS. FLOOR FINISHES TO BE INSTALLED PRIOR TO EQUIPMENT INSTALLATION, BY OTHERS.
6. WIDTH OF BASE COPING AT WALLS AGAINST PROCESSING SINKS NOT TO EXCEED 3/4" FROM WALL FACE, BY OTHERS.
7. REFER TO INDIVIDUAL EQUIPMENT TECHNICAL SPECIFICATIONS ON SHEETS 02-03 FOR UTILITY REQUIREMENTS.
8. ANY SPRINKLER HEADS INSTALLED WITHIN 3' OF BELIMED EQUIPMENT MUST BE HIGH-TEMP 270°F SPRINKLER HEADS AND RECESSED FOR SERVICE ACCESS, BY OTHERS.
9. ALL PIPES AND FITTINGS FOR DI WATER TO BE NON-REACTIVE MATERIAL SUCH AS STAINLESS STEEL, CPVC, OR PVDF, THAT MEETS LOCAL CODE REQUIREMENTS, BY OTHERS.
10. ALL EQUIPMENT REQUIRING DOMESTIC HOT/COLD/DI/TREATED WATER SHALL HAVE ONE (1) RECOMMENDED WATER PRESSURE GAUGE AT WATER SUPPLY INPUT PER BANK OF EQUIPMENT, TO BE SUPPLIED AND INSTALLED BY OTHERS.
11. ALL EQUIPMENT REQUIRING COMPRESSED AIR SHALL HAVE ONE (1) RECOMMENDED AIR PRESSURE GAUGE AT AIR SUPPLY INPUT PER BANK OF EQUIPMENT, TO BE SUPPLIED AND INSTALLED BY OTHERS.
12. ALL EQUIPMENT REQUIRING PRESSURE RELIEF VALVES MUST BE PIPED WITH UNIONS.

EQUIPMENT LIST			
ITEM	QTY	EQUIPMENT	SUPPLEMENTS
NEW EQUIPMENT			
A1	2	WD290IQ-ME2 WASHER/DISINFECTOR	ENC292DN108D ENCLOSURE DI PRE-HEATER (x2)
C1	1	136 DRYING CABINET	
D1	1	246C ULTRASONIC CLEANER	
E1	1	PS3012035-AH TRIPLE BASIN SINK	R-L WORKFLOW 308-30" BASINS
F1	1	BDP100 DOSING PUMP	
G1	3	PB3672 PREP & PACK TABLE	
H1	2	MST-V 6012 VS1E-ELD STERILIZER	ENC600E-2R-1 ENCLOSURE CHILLED WATER COOLING LOOP (x2)
FUTURE EQUIPMENT			
BF	1	AUTOMATED RETURN GATE	SISO2X-G01 FREE ROLLER CONVEYOR
HF	1	MST-V 6012 VS1E-ELD STERILIZER	ENC600E-1R-1 ENCLOSURE CHILLED WATER COOLING LOOP

REVISION SCHEDULE		
REV. NO.	REV. DATE	DESCRIPTION



1 MECHANICAL PLAN
3/8" = 1'-0"



2 ELECTRICAL PLAN
3/8" = 1'-0"

LEGEND

LINE TYPES
 --- CONDUIT ABOVE CEILING, BY OTHERS. FINAL ROUTING
 - - - T.B.D. BY OTHERS.

ELECTRICAL NOTES:
 UTILITIES FOR FUTURE EQUIPMENT, INSTALLATION BY OTHERS.
 (01) FOOTPRINT OF FUTURE EQUIPMENT TO REMAIN FREE OF ANY ADDITIONAL PLUMBING, MECHANICAL, OR ELECTRICAL EQUIPMENT.

CONDUIT FOR DETERGENT LINE MINIMUM 3". USE SWEEP TYPE FITTINGS ABOVE CEILING HEIGHT. CONDUIT NOT TO EXCEED 30 LINEAR FEET.
 (02) INSTALLED BY OTHERS. CONDUIT SHOULD TERMINATE WITH CONDUIT BUSHING FLUSH WITH FINISHED CEILING IN DETERGENT ROOM AND 6" OFF OF AN ADJACENT FINISHED WALL, BY OTHERS

(03) RECOMMENDED SERVICE DISCONNECT LOCATION. REFER TO TECHNICAL SPECIFICATIONS CHART FOR UTILITY REQUIREMENTS. CONSULT BELIMED PRIOR TO INSTALLING IN FINAL LOCATION. SERVICE DISCONNECTS TO BE PROVIDED AND INSTALLED BY OTHERS PER LOCAL CODE.

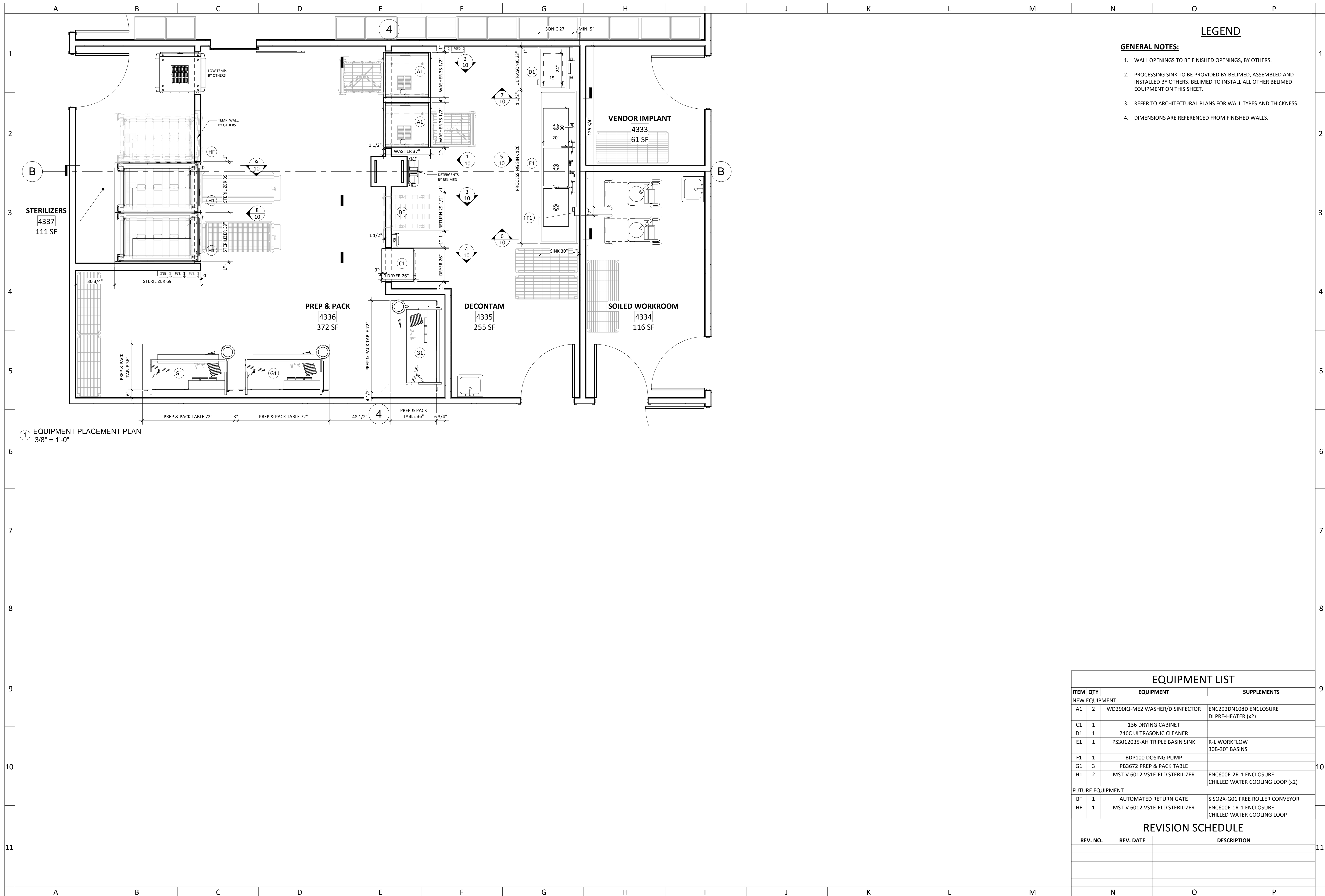
(04) RECOMMENDED TELE/POWER/DATA LOCATION, BY OTHERS. SEE POWER BASED WORKSTATION TECHNICAL SPECIFICATIONS ON SHEETS 02-03.

GENERAL NOTES:

- REFER TO INDIVIDUAL EQUIPMENT TECHNICAL SPECIFICATIONS ON SHEET 02 FOR UTILITY REQUIREMENTS, EQUIPMENT NOISE AND HEAT RADIATION.
- ALL BELIMED EQUIPMENT MUST BE ON AND ACTIVE PRIOR TO SPACE BALANCING. AMBIENT CONDITIONS MUST NOT EXCEED 104°F.
- ALL WORK THIS SHEET TO BE PERFORMED BY OTHERS, UNLESS OTHERWISE NOTED.
- REFER TO ARCHITECTURAL PLANS FOR WALL TYPES AND THICKNESS.
- DIMENSIONS ARE REFERENCED FROM FINISHED WALLS.
- OVERHEAD LIGHTING AND DUPLEX RECEPTACLE TO BE PROVIDED WITHIN SERVICE AREAS PER LOCAL CODE, BY OTHERS.

EQUIPMENT LIST			
ITEM	QTY	EQUIPMENT	SUPPLEMENTS
NEW EQUIPMENT			
A1	2	WD290IQ-ME2 WASHER/DISINFECTOR	ENC292DN108D ENCLOSURE DI PRE-HEATER (x2)
C1	1	136 DRYING CABINET	
D1	1	246C ULTRASONIC CLEANER	
E1	1	PS3012035-AH TRIPLE BASIN SINK	R-L WORKFLOW 30B-30" BASINS
F1	1	BDP100 DOSING PUMP	
G1	3	PB3672 PREP & PACK TABLE	
H1	2	MST-V 6012 VS1E-ELD STERILIZER	ENC600E-2R-1 ENCLOSURE CHILLED WATER COOLING LOOP (x2)
FUTURE EQUIPMENT			
BF	1	AUTOMATED RETURN GATE	SISO2X-G01 FREE ROLLER CONVEYOR
HF	1	MST-V 6012 VS1E-ELD STERILIZER	ENC600E-1R-1 ENCLOSURE CHILLED WATER COOLING LOOP

REVISION SCHEDULE		
REV. NO.	REV. DATE	DESCRIPTION



LEGEND

GENERAL NOTES:

1. WALL OPENINGS TO BE FINISHED OPENINGS, BY OTHERS.
2. PROCESSING SINK TO BE PROVIDED BY BELIMED, ASSEMBLED AND INSTALLED BY OTHERS. BELIMED TO INSTALL ALL OTHER BELIMED EQUIPMENT ON THIS SHEET.
3. REFER TO ARCHITECTURAL PLANS FOR WALL TYPES AND THICKNESS.
4. DIMENSIONS ARE REFERENCED FROM FINISHED WALLS.

1 EQUIPMENT PLACEMENT PLAN
3/8" = 1'-0"

EQUIPMENT LIST			
ITEM	QTY	EQUIPMENT	SUPPLEMENTS
NEW EQUIPMENT			
A1	2	WD290IQ-ME2 WASHER/DISINFECTOR	ENC292DN108D ENCLOSURE DI PRE-HEATER (x2)
C1	1	136 DRYING CABINET	
D1	1	246C ULTRASONIC CLEANER	
E1	1	PS3012035-AH TRIPLE BASIN SINK	R-L WORKFLOW 30B-30" BASINS
F1	1	BDP100 DOSING PUMP	
G1	3	PB3672 PREP & PACK TABLE	
H1	2	MST-V 6012 VS1E-ELD STERILIZER	ENC600E-2R-1 ENCLOSURE CHILLED WATER COOLING LOOP (x2)
FUTURE EQUIPMENT			
BF	1	AUTOMATED RETURN GATE	SISO2X-G01 FREE ROLLER CONVEYOR
HF	1	MST-V 6012 VS1E-ELD STERILIZER	ENC600E-1R-1 ENCLOSURE CHILLED WATER COOLING LOOP

REVISION SCHEDULE		
REV. NO.	REV. DATE	DESCRIPTION

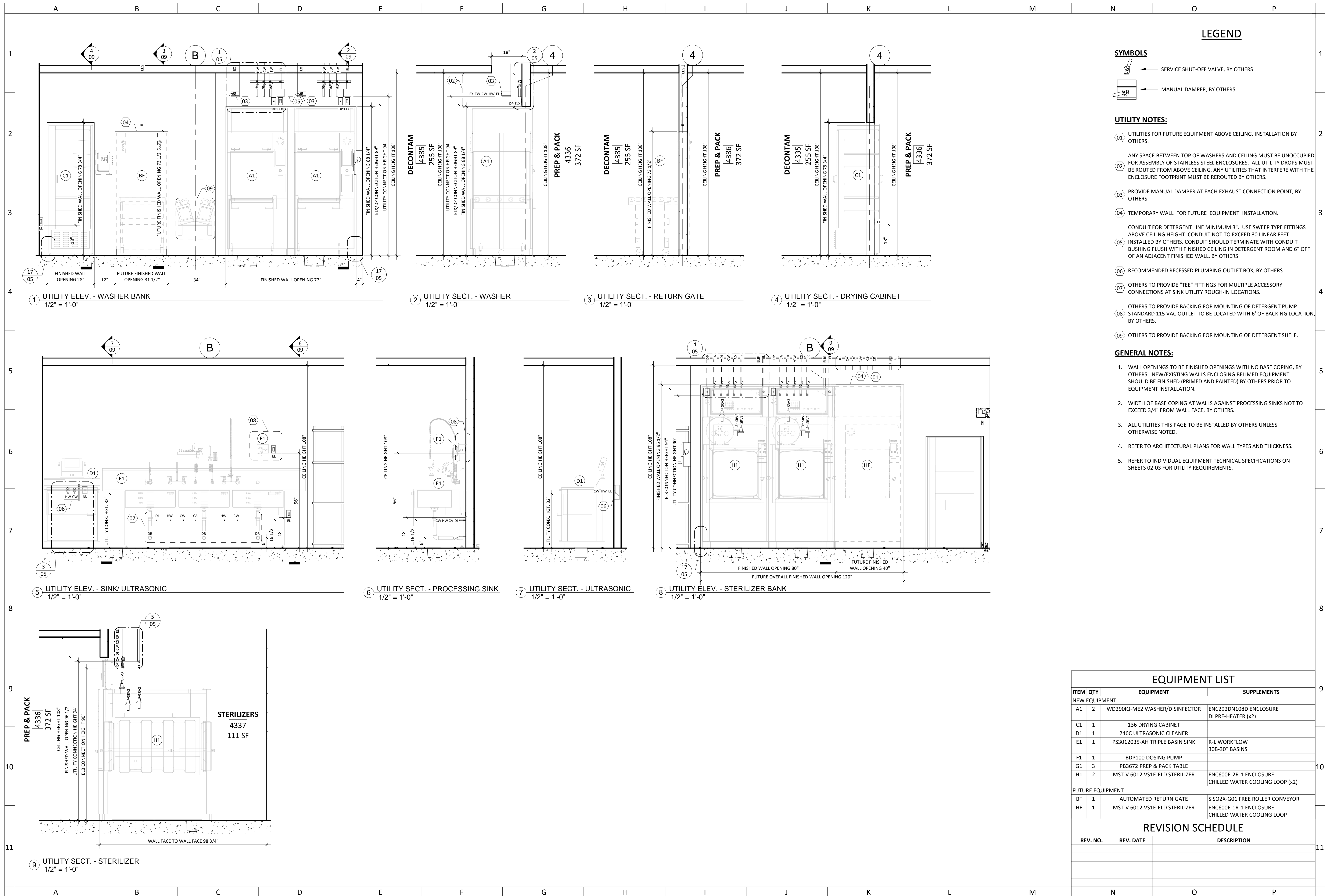
BELIMED CONFIDENTIAL DISCLAIMER
THE INFORMATION CONTAINED IN THESE DOCUMENTS IS CONFIDENTIAL, PRIVILEGED, AND ONLY FOR THE INTENDED RECIPIENT AND MAY NOT BE USED, PUBLISHED, OR REDISTRIBUTED WITHOUT THE PRIOR WRITTEN CONSENT OF BELIMED, INC.

INSTALLATION DRAWING
EQUIPMENT PLACEMENT PLAN

XYZ MEDICAL CENTER - NEW SURGERY CENTER
ANYWHERE, USA

DATE: 04/29/2022
SCALE: 3/8" = 1'-0"
DRAWN BY: A. JONES
DRAWING NO. EXAMPLE
REVISION NO. 3
SHEET: 08 OF 10

SHEET SIZE: 24" X 36"



LEGEND

SYMBOLS

- SERVICE SHUT-OFF VALVE, BY OTHERS
- MANUAL DAMPER, BY OTHERS

UTILITY NOTES:

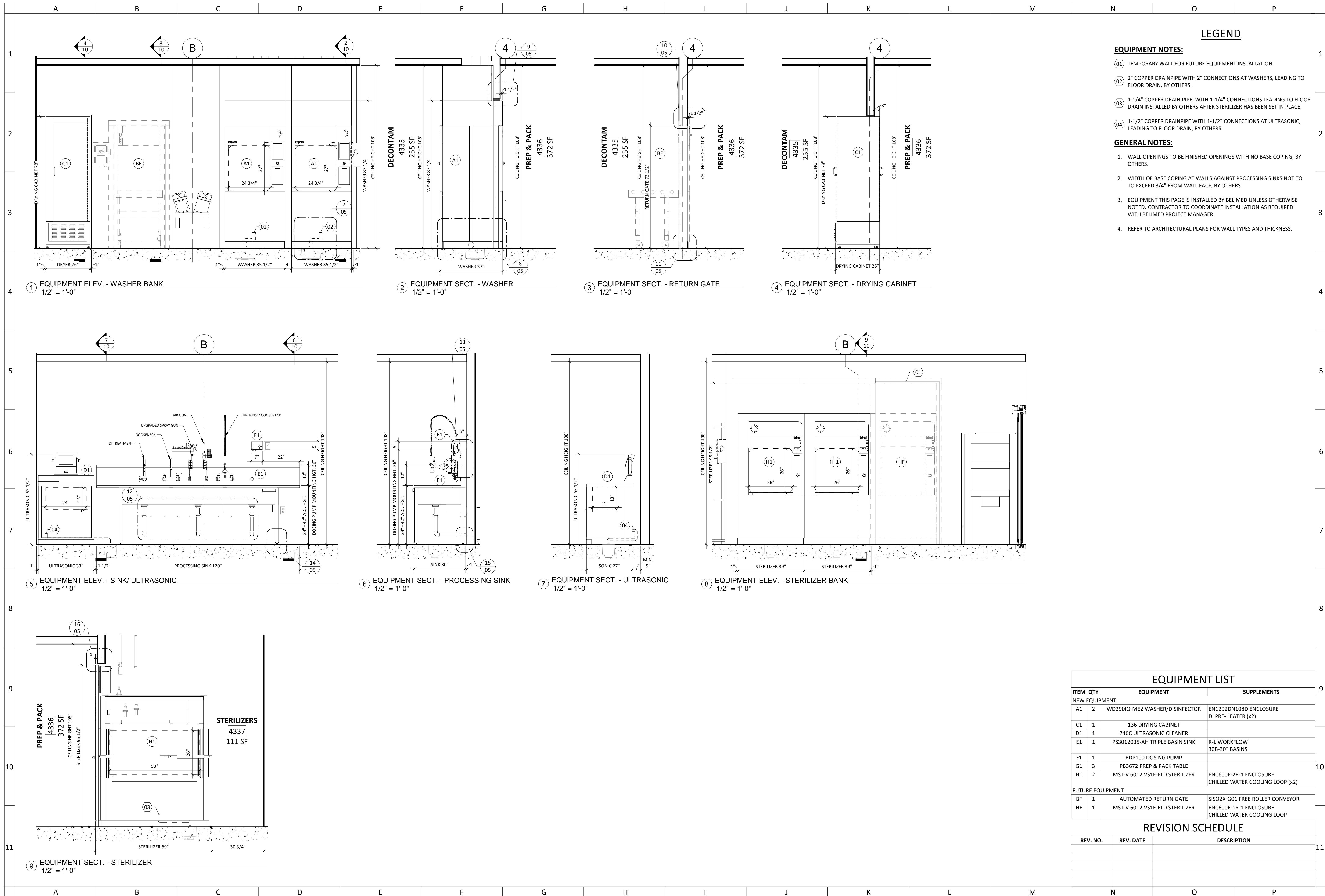
- 01 UTILITIES FOR FUTURE EQUIPMENT ABOVE CEILING, INSTALLATION BY OTHERS.
- 02 ANY SPACE BETWEEN TOP OF WASHERS AND CEILING MUST BE UNOCCUPIED FOR ASSEMBLY OF STAINLESS STEEL ENCLOSURES. ALL UTILITY DROPS MUST BE ROUTED FROM ABOVE CEILING. ANY UTILITIES THAT INTERFERE WITH THE ENCLOSURE FOOTPRINT MUST BE REROUTED BY OTHERS.
- 03 PROVIDE MANUAL DAMPER AT EACH EXHAUST CONNECTION POINT, BY OTHERS.
- 04 TEMPORARY WALL FOR FUTURE EQUIPMENT INSTALLATION.
- 05 CONDUIT FOR DETERGENT LINE MINIMUM 3". USE SWEEP TYPE FITTINGS ABOVE CEILING HEIGHT. CONDUIT NOT TO EXCEED 30 LINEAR FEET.
- 06 INSTALLED BY OTHERS. CONDUIT SHOULD TERMINATE WITH CONDUIT BUSHING FLUSH WITH FINISHED CEILING IN DETERGENT ROOM AND 6" OFF OF AN ADJACENT FINISHED WALL, BY OTHERS
- 07 RECOMMENDED RECESSED PLUMBING OUTLET BOX, BY OTHERS.
- 08 OTHERS TO PROVIDE "TEE" FITTINGS FOR MULTIPLE ACCESSORY CONNECTIONS AT SINK UTILITY ROUGH-IN LOCATIONS.
- 09 OTHERS TO PROVIDE BACKING FOR MOUNTING OF DETERGENT PUMP. STANDARD 115 VAC OUTLET TO BE LOCATED WITH 6" OF BACKING LOCATION, BY OTHERS.
- 10 OTHERS TO PROVIDE BACKING FOR MOUNTING OF DETERGENT SHELF.

GENERAL NOTES:

1. WALL OPENINGS TO BE FINISHED OPENINGS WITH NO BASE COPING, BY OTHERS. NEW/EXISTING WALLS ENCLOSING BELIMED EQUIPMENT SHOULD BE FINISHED (PRIMED AND PAINTED) BY OTHERS PRIOR TO EQUIPMENT INSTALLATION.
2. WIDTH OF BASE COPING AT WALLS AGAINST PROCESSING SINKS NOT TO EXCEED 3/4" FROM WALL FACE, BY OTHERS.
3. ALL UTILITIES THIS PAGE TO BE INSTALLED BY OTHERS UNLESS OTHERWISE NOTED.
4. REFER TO ARCHITECTURAL PLANS FOR WALL TYPES AND THICKNESS.
5. REFER TO INDIVIDUAL EQUIPMENT TECHNICAL SPECIFICATIONS ON SHEETS 02-03 FOR UTILITY REQUIREMENTS.

EQUIPMENT LIST			
ITEM	QTY	EQUIPMENT	SUPPLEMENTS
NEW EQUIPMENT			
A1	2	WD290IQ-ME2 WASHER/DISINFECTOR	ENC292DN108D ENCLOSURE DI PRE-HEATER (x2)
C1	1	136 DRYING CABINET	
D1	1	246C ULTRASONIC CLEANER	
E1	1	PS3012035-AH TRIPLE BASIN SINK	R-L WORKFLOW 308-30" BASINS
F1	1	BDP100 DOSING PUMP	
G1	3	PB3672 PREP & PACK TABLE	
H1	2	MST-V 6012 VS1E-ELD STERILIZER	ENC600E-2R-1 ENCLOSURE CHILLED WATER COOLING LOOP (x2)
FUTURE EQUIPMENT			
BF	1	AUTOMATED RETURN GATE	SISO2X-G01 FREE ROLLER CONVEYOR
HF	1	MST-V 6012 VS1E-ELD STERILIZER	ENC600E-1R-1 ENCLOSURE CHILLED WATER COOLING LOOP

REVISION SCHEDULE		
REV. NO.	REV. DATE	DESCRIPTION



LEGEND

EQUIPMENT NOTES:

- 01 TEMPORARY WALL FOR FUTURE EQUIPMENT INSTALLATION.
- 02 2" COPPER DRAINPIPE WITH 2" CONNECTIONS AT WASHERS, LEADING TO FLOOR DRAIN, BY OTHERS.
- 03 1-1/4" COPPER DRAIN PIPE, WITH 1-1/4" CONNECTIONS LEADING TO FLOOR DRAIN INSTALLED BY OTHERS AFTER STERILIZER HAS BEEN SET IN PLACE.
- 04 1-1/2" COPPER DRAINPIPE WITH 1-1/2" CONNECTIONS AT ULTRASONIC, LEADING TO FLOOR DRAIN, BY OTHERS.

GENERAL NOTES:

- 1. WALL OPENINGS TO BE FINISHED OPENINGS WITH NO BASE COPING, BY OTHERS.
- 2. WIDTH OF BASE COPING AT WALLS AGAINST PROCESSING SINKS NOT TO EXCEED 3/4" FROM WALL FACE, BY OTHERS.
- 3. EQUIPMENT THIS PAGE IS INSTALLED BY BELIMED UNLESS OTHERWISE NOTED. CONTRACTOR TO COORDINATE INSTALLATION AS REQUIRED WITH BELIMED PROJECT MANAGER.
- 4. REFER TO ARCHITECTURAL PLANS FOR WALL TYPES AND THICKNESS.

EQUIPMENT LIST		
ITEM QTY	EQUIPMENT	SUPPLEMENTS
NEW EQUIPMENT		
A1 2	WD290IQ-ME2 WASHER/DISINFECTOR	ENC292DN108D ENCLOSURE DI PRE-HEATER (x2)
C1 1	136 DRYING CABINET	
D1 1	246C ULTRASONIC CLEANER	
E1 1	PS3012035-AH TRIPLE BASIN SINK	R-L WORKFLOW 30B-30" BASINS
F1 1	BDP100 DOSING PUMP	
G1 3	PB3672 PREP & PACK TABLE	
H1 2	MST-V 6012 VS1E-ELD STERILIZER	ENC600E-2R-1 ENCLOSURE CHILLED WATER COOLING LOOP (x2)
FUTURE EQUIPMENT		
BF 1	AUTOMATED RETURN GATE	SISO2X-G01 FREE ROLLER CONVEYOR
HF 1	MST-V 6012 VS1E-ELD STERILIZER	ENC600E-1R-1 ENCLOSURE CHILLED WATER COOLING LOOP

REVISION SCHEDULE		
REV. NO.	REV. DATE	DESCRIPTION